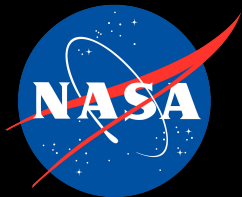


The Starchive: An Open Access, Open Source Database of Nearby and Young Stars



Angelle Tanner, PI
Mississippi State Univ.

Will Maxcy
Mario Elfeki
Chris Gelino
Donna Reece
A postdoc
You?



Some background: An AO image only archive was first discussed at the Spirit of Lyot in 2007.

STARGATE

**IMAGES: an
Image Archive
Generated for
Exoplanet
Surveys**



SUCCESS!

Starchive.org



INITIAL STELLAR CONTENT

Nearby: >3000 stars, brown dwarfs and planets within 25 parsecs as cataloged by RECONS (June 2015)

Young: >500 young stars within 50-100 parsecs (multiple surveys)

METADATA

Observational Property

Photometry
Radial Velocity, multi epoch
RA/Dec
Proper motion
Rotational Velocity
Metallicity
Activity (RHK, S)
Infrared Excess
Parallax
Multiplicity
Observed Radius

Physical or Derived Property

Stellar Radius
Age
Distance
Luminosity/SEDs
Mass
Spectral Type
Habitable Zone
Transit Times
Planet orbit properties
Insolation zone

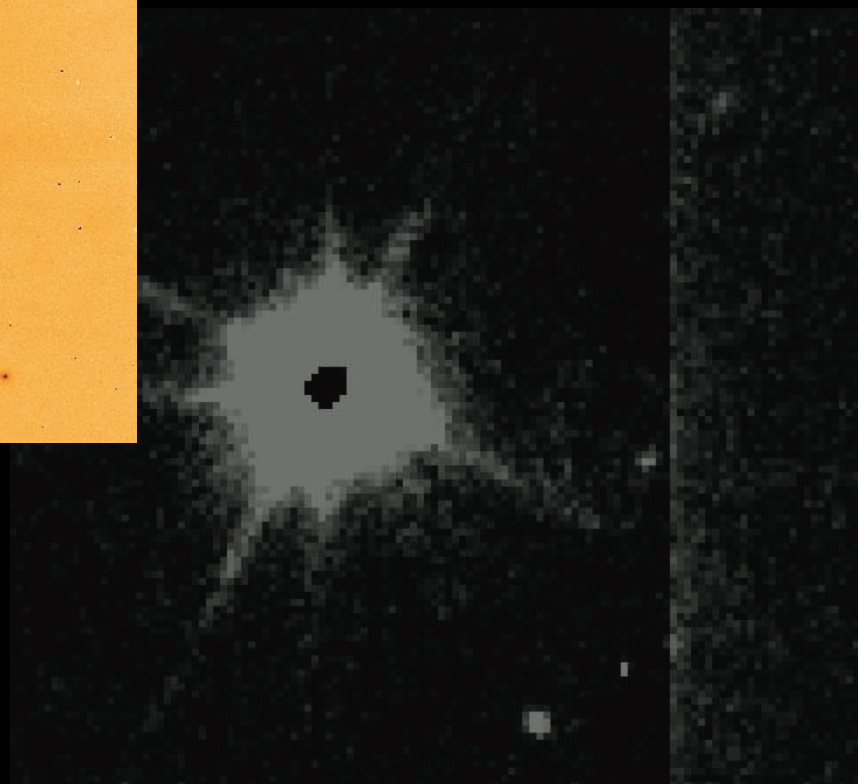
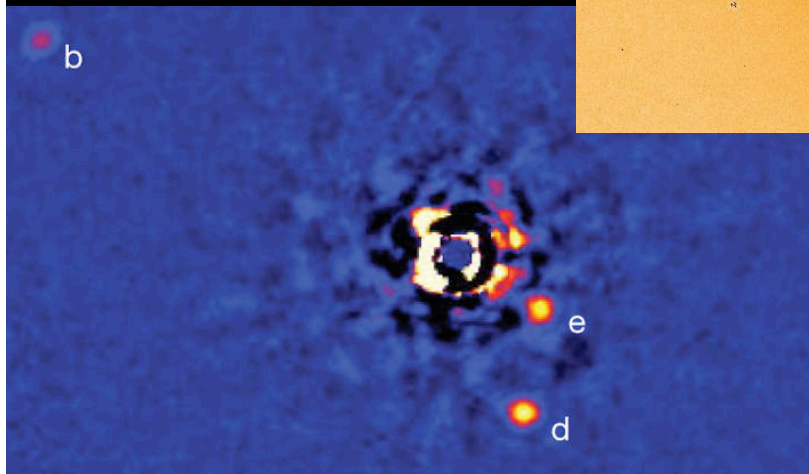
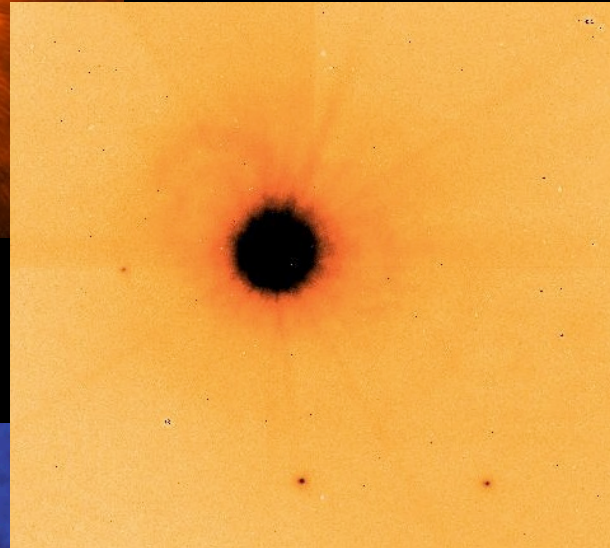
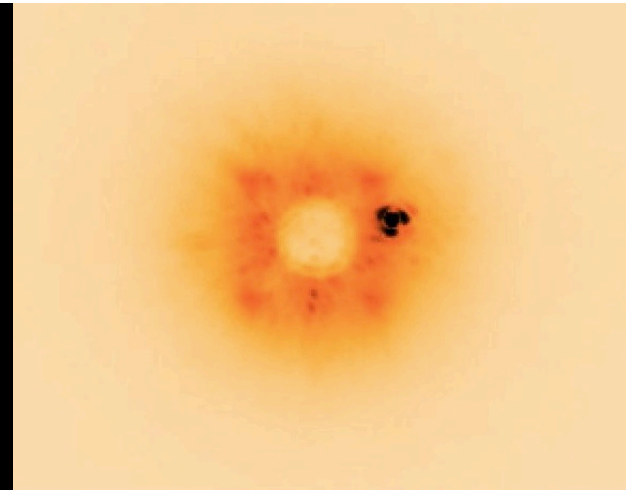
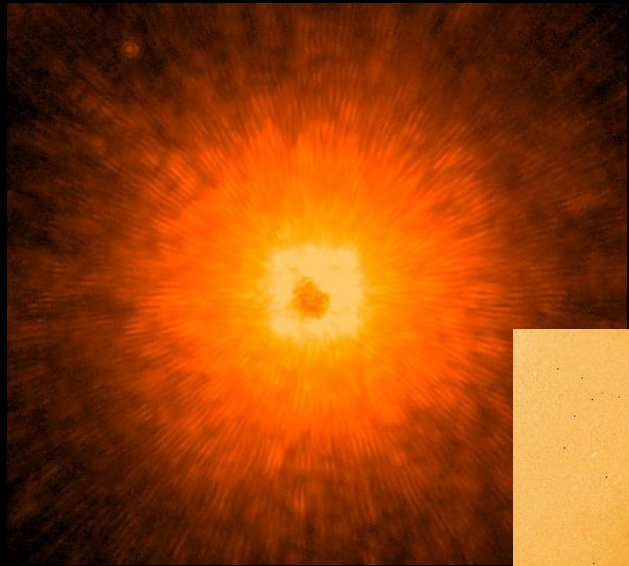
**Multiple measurements & varying
precisions**

RESOURCES

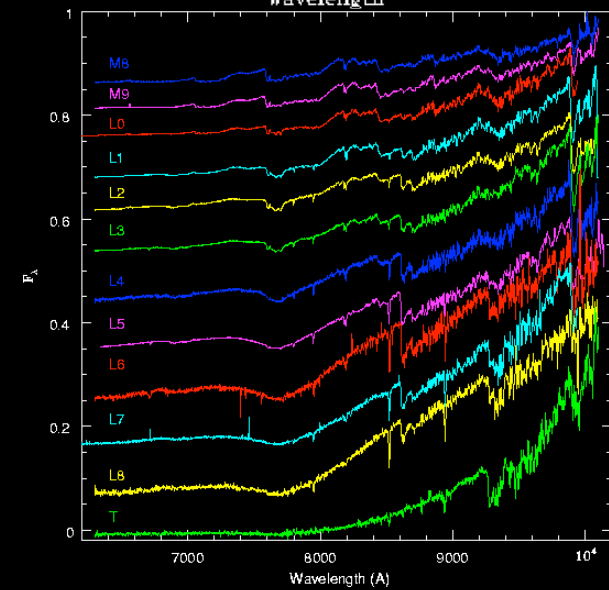
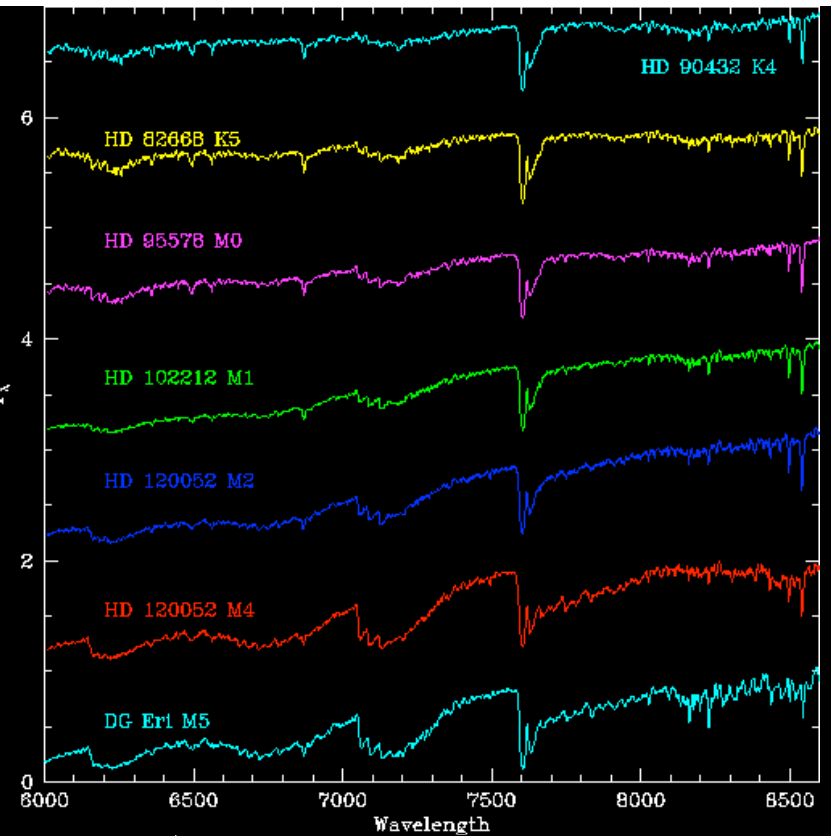
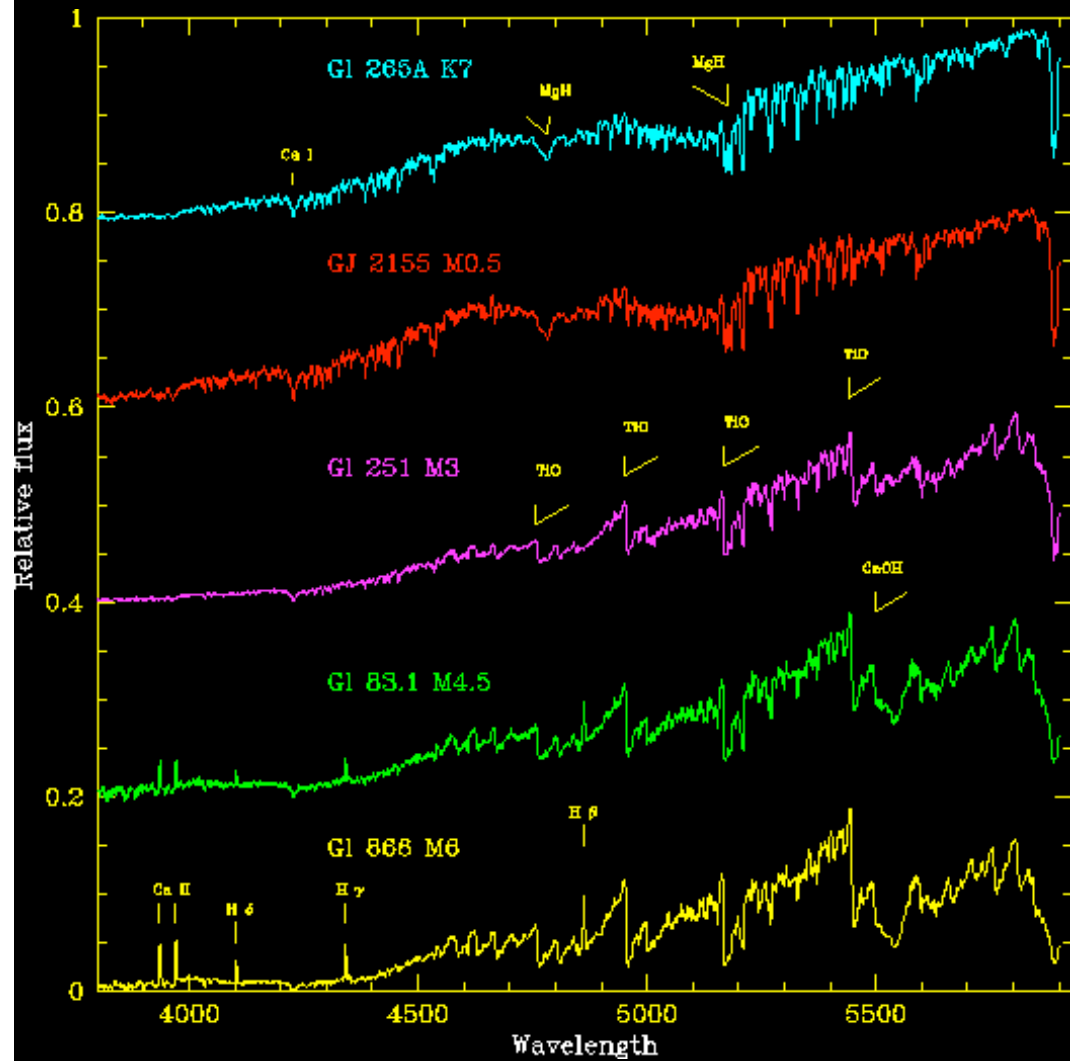
- ★ SIMBAD/Vizier
- ★ Exoplanets.org et al.
- ★ NASA Exoplanet Archive
- ★ Published surveys
- ★ RECONS
- ★ Dwarfarchives.org
- ★ The Community

HIGH CONTRAST IMAGES

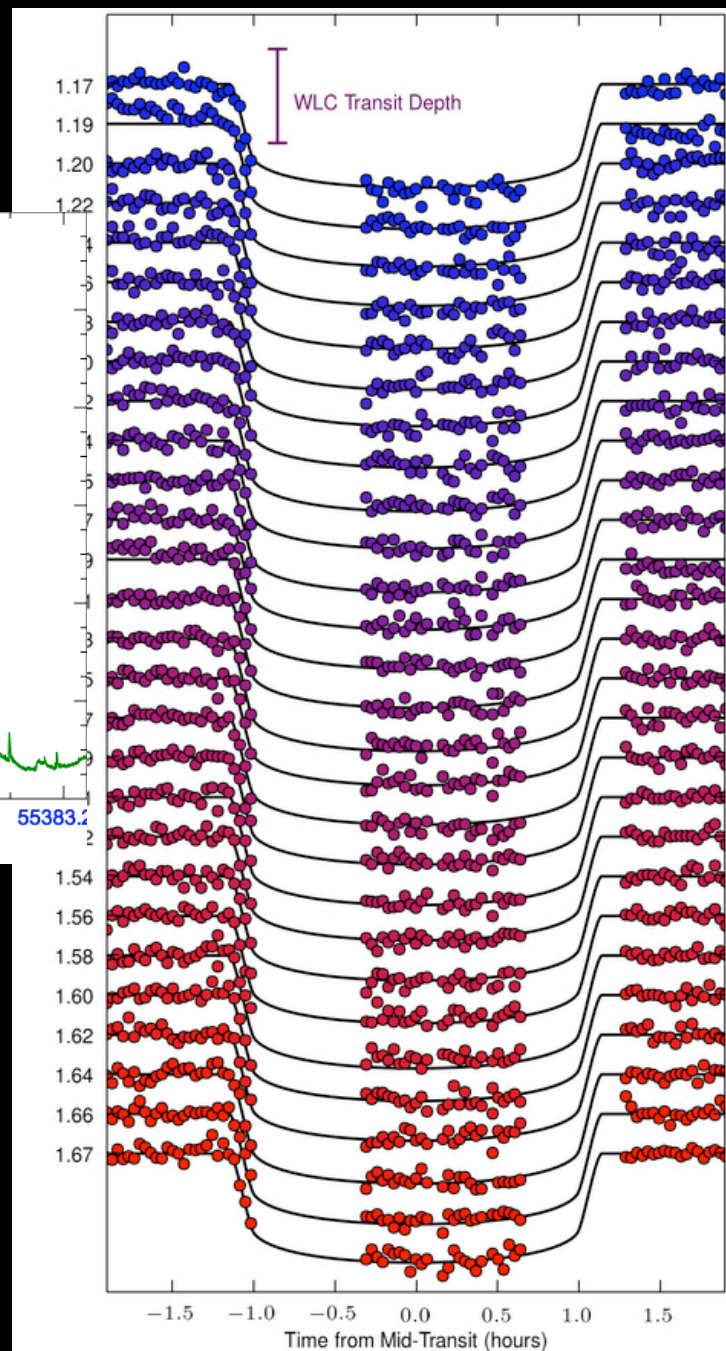
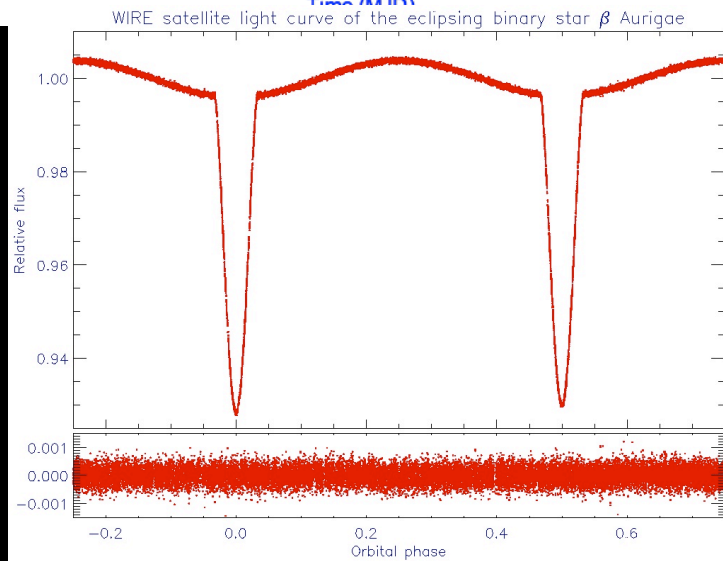
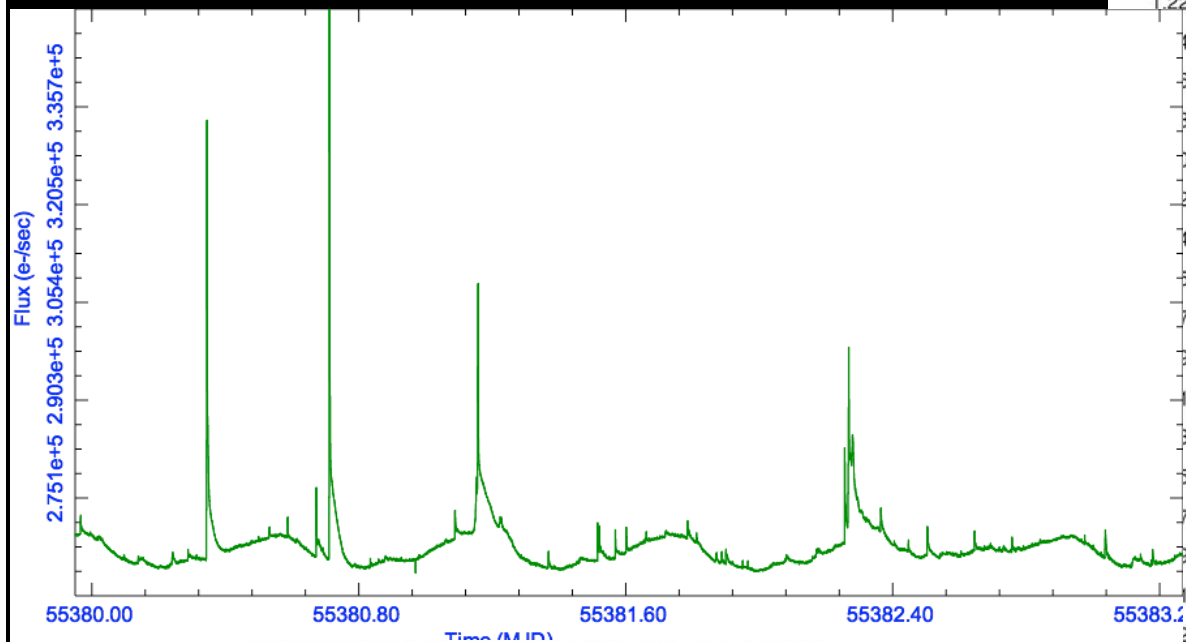
Robo-AO image



SPECTRA – O/IR

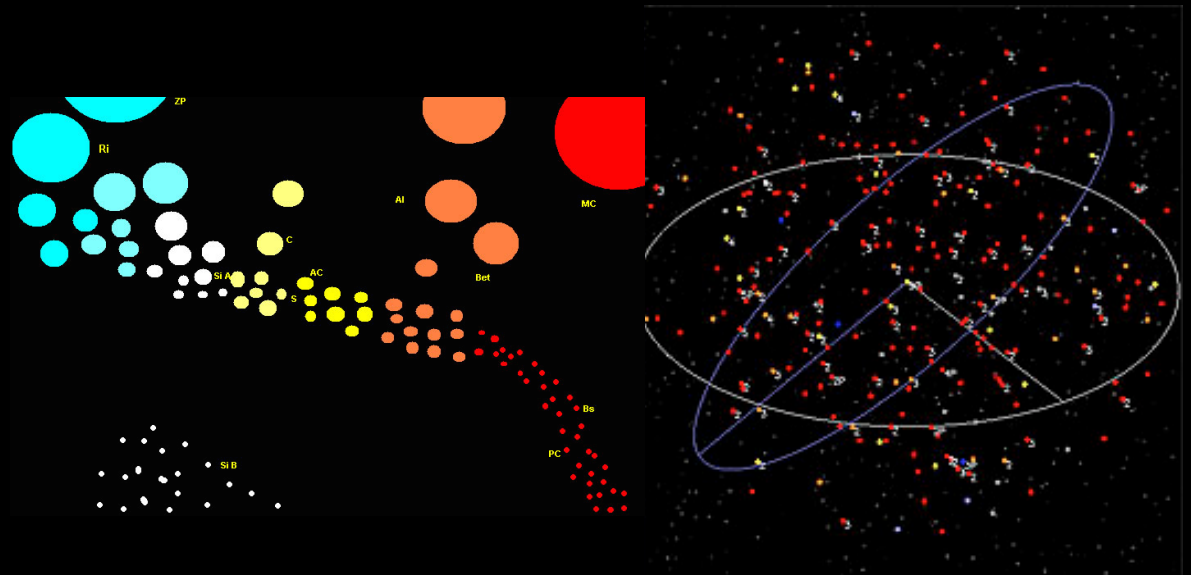


LIGHT CURVES



QUERIES

- ★ Single target – name or coord
- ★ List of targets – name or coord
- ★ Ranking tables via criteria
- ★ Area (circle/box) searches
- ★ Reference
- ★ Scripts
- ★ Map select



DOWNLOADS

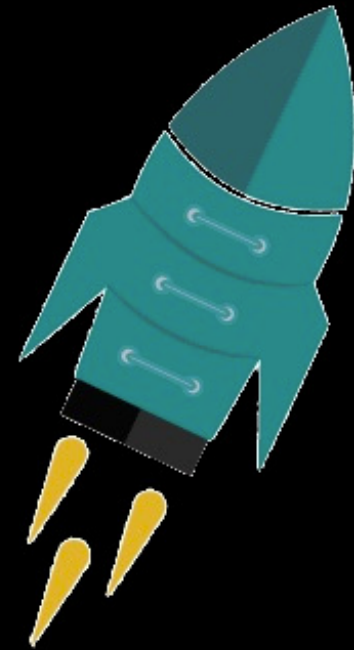
- ★ Excel/CSV
- ★ Text
- ★ Images
- ★ Text spectral files
- ★ Text light curves
- ★ Tarballs



Anyone can download!

UPLOADS

- ★ Form entry by hand
- ★ Text upload
- ★ Excel/CSV upload



- Only certified members will be allowed to upload data
- Uploaded material will be verified by a verification team and the community

Learn from Kepler Community Follow Up Observing Program

| Spectroscopy Table (table=spectroscopy&koi=1&tid=1) | | | | | | | |
|---|------------|-------------------------|-----------------|------|-----------------------|-----------|----------|
| Telescope | Instrument | Spectral resolution (R) | Wavelength (nm) | Type | Observation date (UT) | Notes | User |
| Keck | HIRES | 60000 | 3 | | 2011-06-16 10:06:02 | No Iodine | isaacson |

| Imaging Table (table=imaging&koi=1&tid=1) | | | | | | |
|---|------------|-------------|-----------------|---|---------------------|---------|
| Telescope | Instrument | Filter | Wavelength (nm) | Notes | Date | User |
| Palomar 1.5-m | Robo-AO | i | | http://arxiv.org/abs/1312.4958 | 2014-01-30 19:17:13 | baranec |
| WIYN | DSSI | 692 (40) nm | | Speckle | 2013-09-23 14:23:30 | everett |
| WIYN | DSSI | 880 (50) nm | | Speckle | 2013-09-23 14:23:30 | everett |
| WIYN | DSSI | 692 (40) nm | | Speckle | 2013-09-21 18:36:06 | everett |
| WIYN | DSSI | 880 (50) nm | | Speckle | 2013-09-21 18:36:06 | everett |
| WIYN | DSSI | 692 (40) nm | | Speckle | 2013-05-01 10:15:22 | everett |
| WIYN | DSSI | 880 (50) nm | | Speckle | 2013-05-01 10:15:22 | everett |

The Starchive team determines a “preferred value”

| Stellar Parameters (5) | | | | | | | | | | | | | ↑ Top |
|------------------------|-----------------|-------------------|--------------|---------------|---------|-----------------|------------------|-------------------|------------------|--|------------------------|---------------|-----------------|
| Teff (K) | log(g) | Radius (R_Sun) | Vsini (km/s) | Spectral Type | logR'HK | [Fe/H] | Dist (pc) | Mass (M_Sun) | Densit (g/cm³) | Notes (View codes) | Date | User | Preferred Value |
| 4812.00 ±101.0 | 4.548 ±0.042 | 0.7550 ±0.0310 | | | | 0.020 ±0.160 | 2.403 ±0.3781 | 0.7340 ±0.0480 | 2.403 ±0.3781 | Q1-Q16 Stellar | 2015-01-30 12:03:24 | keplerproject | ✓ |
| 5000 ±125 | 5.0 ±0.25 | | 0 ±2 | | | | | | | lick, HJD=2455046.793123, C=0.972 | 2013-03-22 10:14:36 | quinn | |
| 5000 ±125 | 5.0 ±0.25 | | 0 ±2 | | | | | | | lick, HJD=2455047.780478, C=0.970 | 2013-03-22 10:14:36 | quinn | |
| 4908 ±44 | 4.7 ±0.1 | | | | | 0.08 ±4 | | | | Keck HIRES decent fit, ipres=60000 B3 | 2013-03-22 10:14:36 | marcy | |
| | | 1.863 ±0 | | | | | | | | KIC | 2013-03-22 10:14:36 | gautier | |

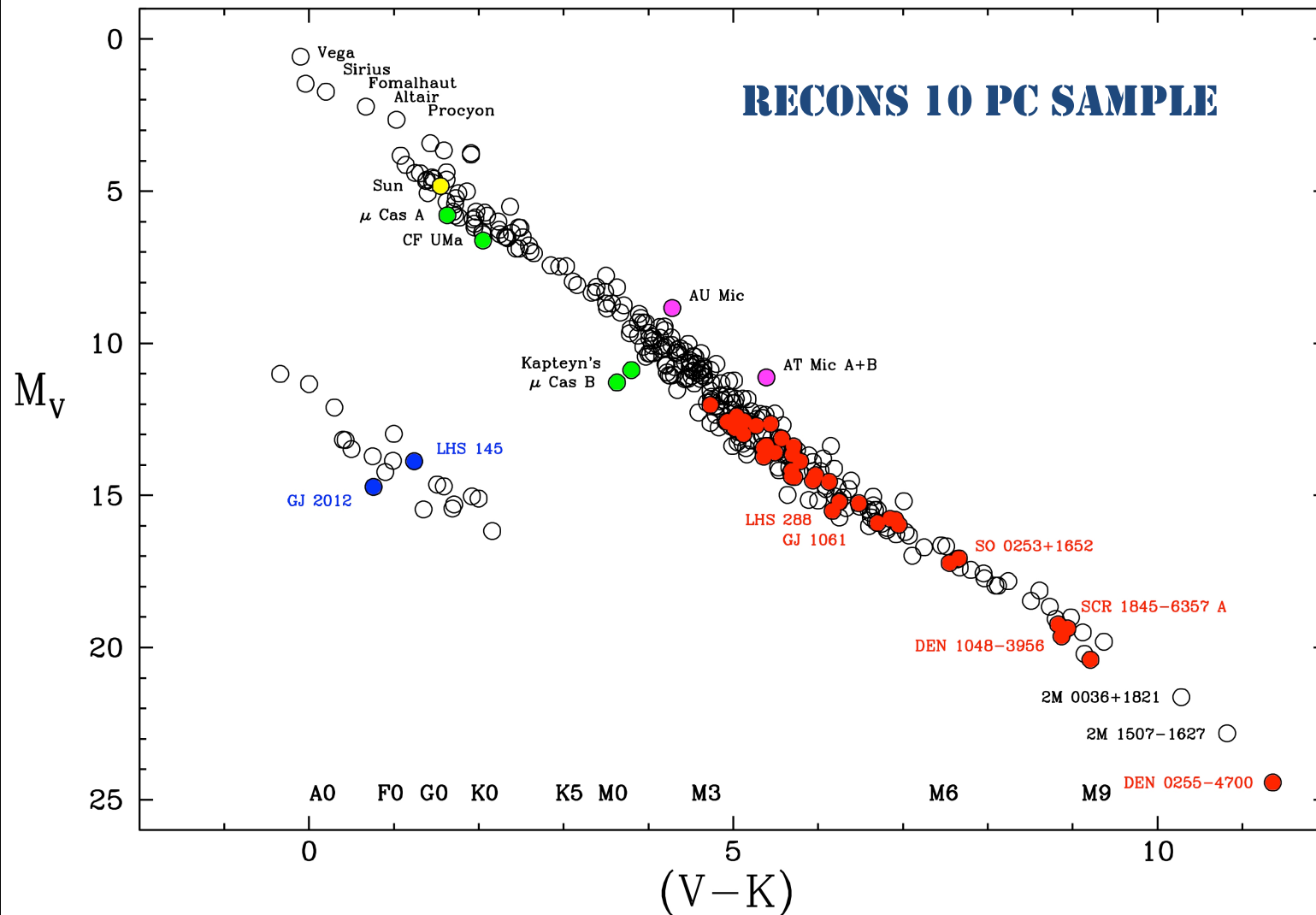
-

Magnitudes (11)

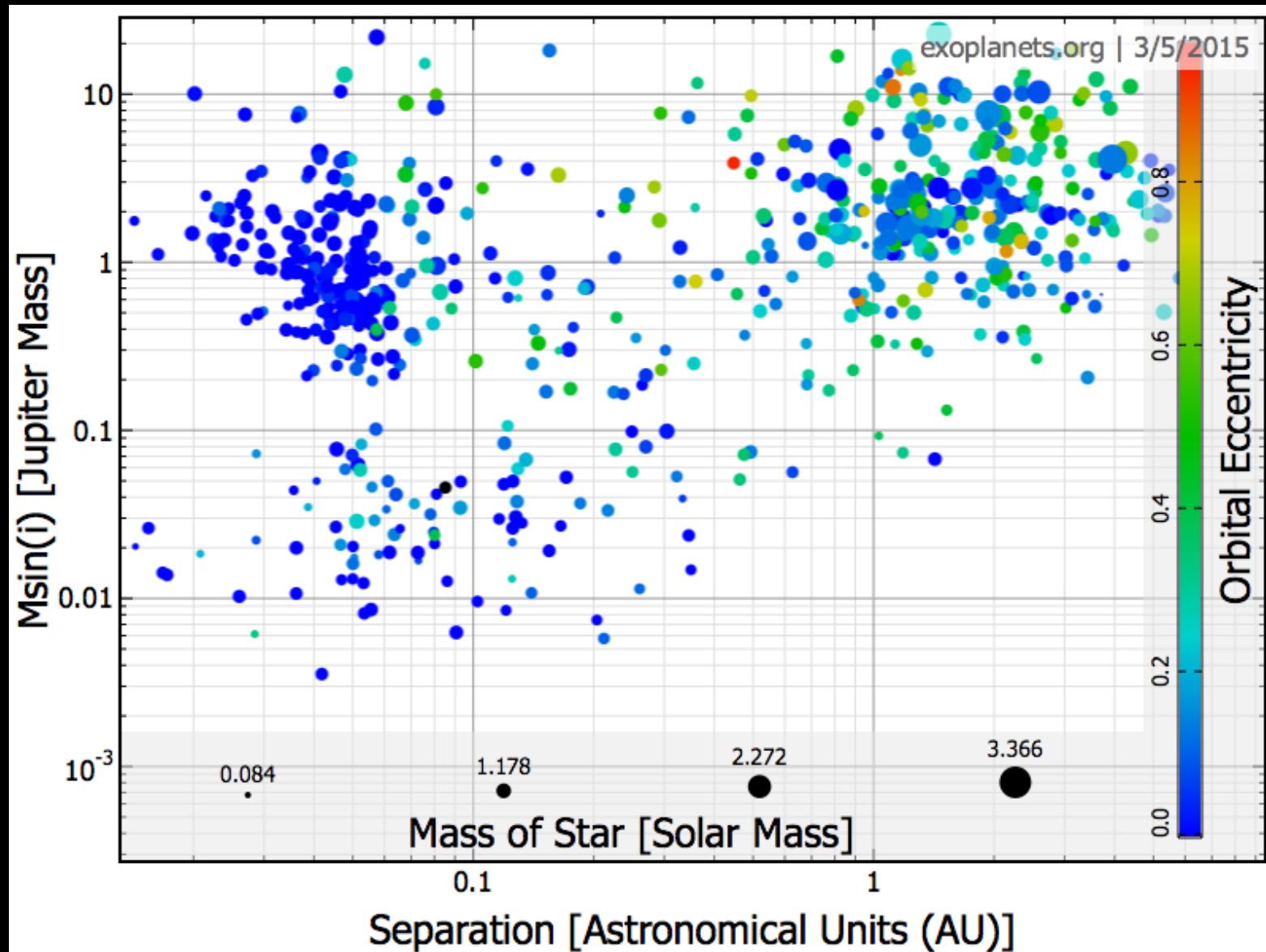
↑ Top

| Band | Value | Notes | Date | User | Preferred Value |
|------|----------------|--|---------------------|---------------|-----------------|
| U | 13.732 ± 0.021 | Closest UBV source from Everett, Howell, Kinemuchi 2012; i | 2014-02-04 14:46:30 | ciardi | ✓ |
| B | 12.832 ± 0.024 | Closest UBV source from Everett, Howell, Kinemuchi 2012; i | 2014-02-04 14:46:34 | ciardi | ✓ |
| g' | 12.289 ± 0.000 | | 2013-12-19 17:00:40 | keplerproject | ✓ |
| V | 11.895 ± 0.020 | Closest UBV source from Everett, Howell, Kinemuchi 2012; i | 2014-02-04 14:46:37 | ciardi | ✓ |
| r' | 11.428 ± 0.000 | | 2013-12-19 17:00:40 | keplerproject | ✓ |
| Kep | 11.492 ± 0.000 | | 2013-12-19 17:00:42 | keplerproject | ✓ |
| i' | 11.150 ± 0.000 | | 2013-12-19 17:00:40 | keplerproject | ✓ |

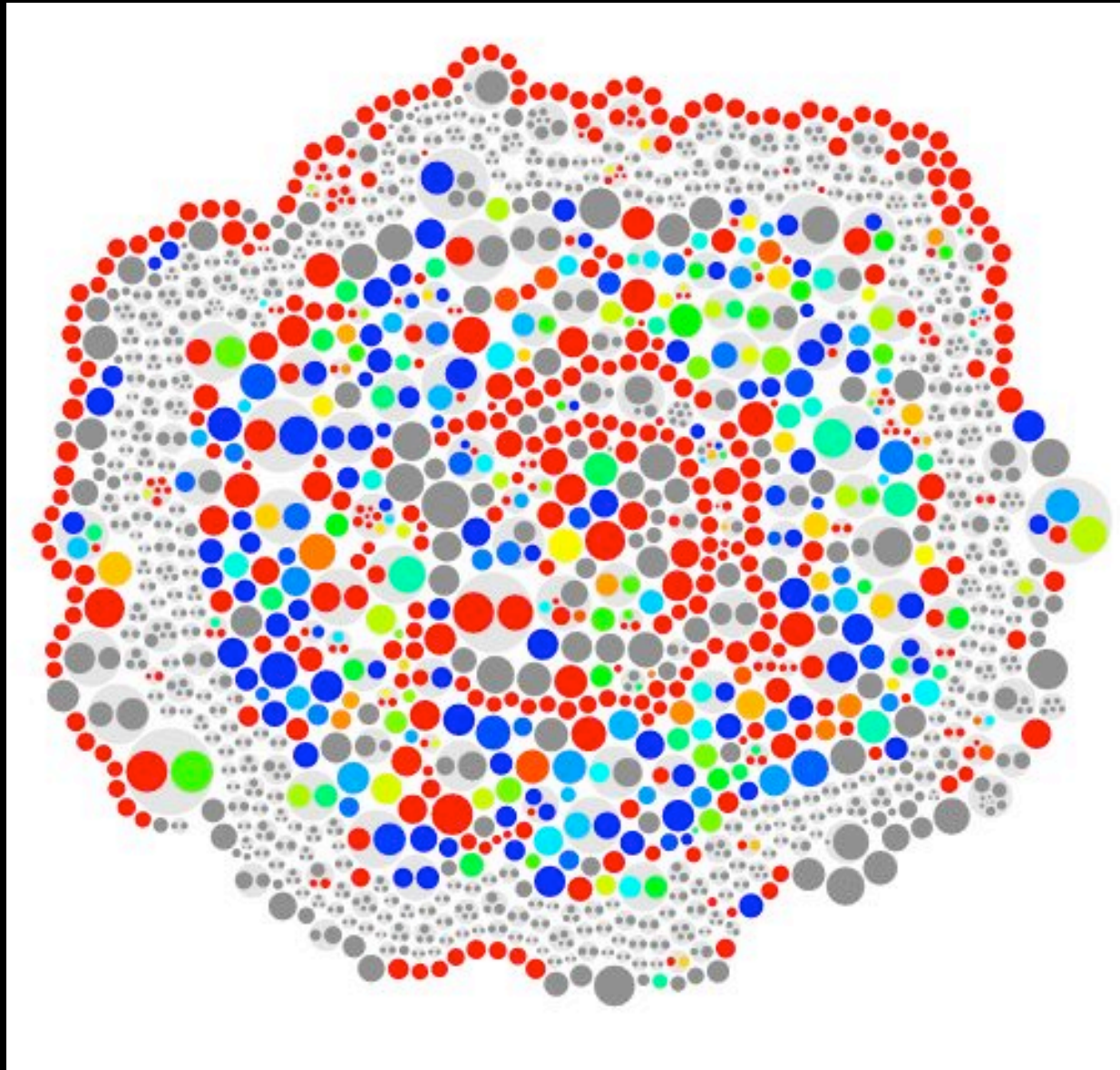
PLOTTING - science



PLOTTING - presentations



PLOTTING - infographics



BASIC FRONT END

Input

Batch Identifier

Upload list here

Batch Coordinate

Upload list here

Single Identifier

List of identifiers

Single Coordinate

Format requirements

Rank Table Criteria

Criteria tutorial

Output

Choose Output Columns

Upload

Supplementary Data

Format requirements

Images

Format requirements

Spectra

Format requirements

News

New Datasets

Comments

Hall of Plots

Citation Criteria

Our Sponsors

Open old Session

 STARCHIVE[SEARCH](#) [CONTACT](#)

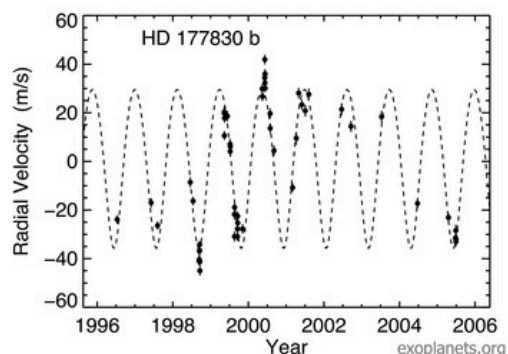
STARCHIVE

An open access web database containing meta data, images
and spectra of stars in our stellar neighborhood.



SINGLE STAR DISPLAY PAGE

HD 177830 b



Discovery and References

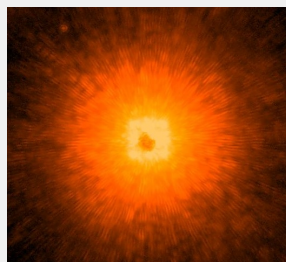
| | |
|---|-------------|
| Other Name | Unavailable |
| First Publication Date | 2000 |
| Method of discovery for the planet | RV |
| Method of discovery of first planet in system | RV |
| Orbit Reference | Butler 2006 |
| First Reference | Vogt 2000 |
| EPE Link | HD 177830 |
| ETD Link | Unavailable |
| Exoplanet Archive Link | HD 177830 b |
| SIMBAD Link | HD 177830 |
| Kepler ID | Unavailable |
| KDE | X |
| EOD | ✓ |
| Microlensing | X |
| Imaging | X |
| Timing | X |
| Astrometry | X |

Orbital Parameters

| | | |
|-------------------------|------------|-------------------|
| Msin(i) | [mjupiter] | 1.320 ± 0.085 |
| Planet Mass | [mjupiter] | 1.320 ± 0.085 |
| Semi-Major Axis | [au] | 1.139 ± 0.033 |
| Separation | [au] | 1.139 ± 0.033 |
| Orbital Period | [day] | 410.1 ± 2.2 |
| Velocity Semi-amplitude | [m/s] | 32.64 ± 0.98 |
| Orbital Eccentricity | | 0.096 ± 0.048 |
| Orbit Inclination | [deg] | Unavailable |
| Argument of Periastron | [deg] | 189 |
| BigΩ | [deg] | Unavailable |
| Time of Periastron | [jd] | 2450254 ± 49 |
| Velocity Slope | [m/s/day] | Unavailable |
| Spin-Orbit Misalignment | [deg] | Unavailable |
| Transit | | X |

Orbital Fit Properties

| | |
|--------------------------|-----|
| Reduced Chi Squared | 1 |
| # of Observations | 54 |
| RMS of Velocities | 6.2 |
| Frozen Eccentricity Flag | X |
| Flag for linear Trend | X |
| Components | 1 |



Stellar Properties

| | |
|-----------------------|----------------------------------|
| Star Name | HD 177830 |
| Binary Flag | ✓ |
| Mass of Star | [msun] 1.17 ± 0.1 |
| Radius of Star | [rsun] 3.99 ± 0.128 |
| [Fe/H] | 0.300 ± 0.05 |
| T _{eff} | [k] 4752 ± 79 |
| Density of star | [g/cm ³] Unavailable |
| log ₁₀ (g) | 3.370 ± 0.02 |
| Vsin(i) | [km/s] 2.54 ± 0.5 |
| Gamma | [km/s] -72.08 ± 0.153 |

Stellar Magnitudes

| | |
|----------------------|-------------|
| V mag | 7.2 |
| B-V | 1.09 |
| 2MASS J | 5.4 |
| 2MASS H | 5 |
| 2MASS K _s | 4.8 |
| S _{HK} | 0.125 |
| log R _{HK} | -5.4 |
| KP | Unavailable |

Coordinates and Catalogs

| | |
|---------------------|---------------------------|
| RA (h:m:s) | +19:05:20.80 |
| DEC (d:m:s) | +25:55:14.83 |
| Parallax | [marsec] 16.94 ± 0.63 |
| Distance to Star | [pc] $59.0 +2.3/-2.1$ |
| Hipparcos Catalog # | 93746 |
| HD # | 177830 |
| Gliese Catalog # | 743 |
| HR # | Unavailable |

NASA Exoplanet archive

OPEN SOURCE



This IS the
data you
seek

Components of the front end will be made
available on github

The community will be encouraged to contribute
plotting functionality

We will document thoroughly!!!

COMMITTEES

Science: What can we DO with all this data?

User: How can we make the Starchive user friendly and useful?

Verification: Is the data correct?

STATUS

Logo - check

Domain - check - starchive.org

Funding - check

Postdoc - being sought

Single object query - check

Discussions with exoplanets.org and NEXSCI
for code sharing - check



STATUS

Logo - check

Domain - check - starchive.org

Funding - check

Postdoc - being sorted

Single object or multiple

Discussing with planets.org and NExSci
for co-branding - check

STAY TUNED!!!

Starchive.org

