

Using DESI spectra to understand ultra-diffuse galaxies in the Coma cluster

Lailani Kenoly, Aaron Romanowsky; San Jose State University

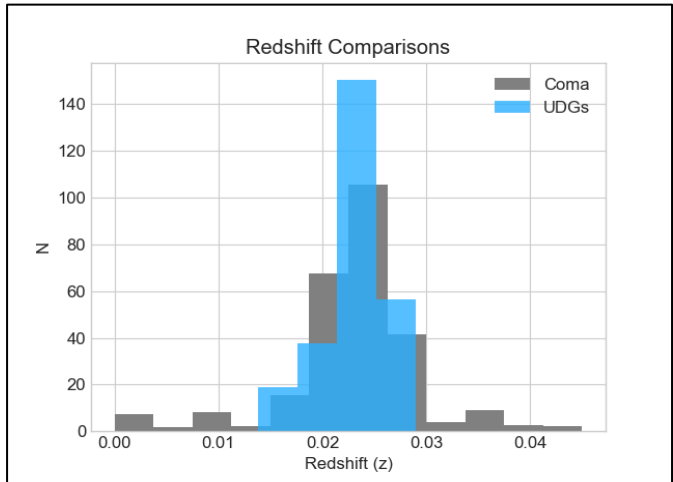
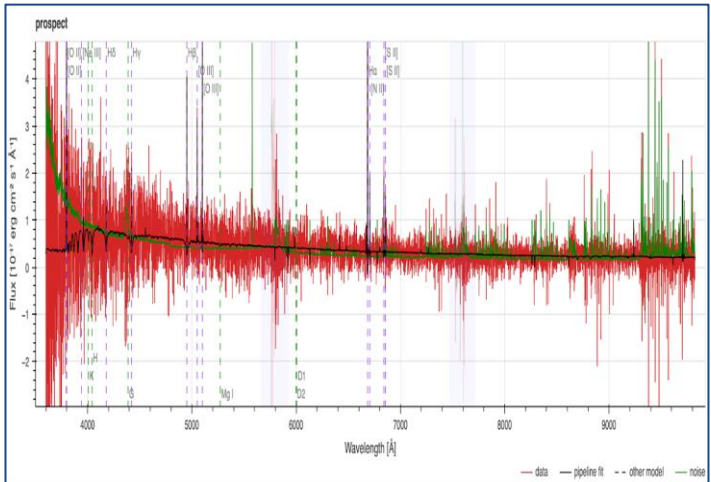
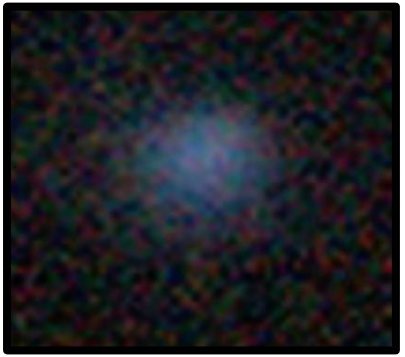


Fig 1) Legacy imaging of UDG from the Bautista et al. (2023) catalog.

Fig 2) Legacy imaging DESI spectra of UDG (fig. 1) from the Bautista et al. (2023) catalog, with significant spectral lines highlighted.

Fig 3) Histogram of the redshifts from the sample of 15 UDGs found in the present study compared to the redshifts of Coma galaxies.