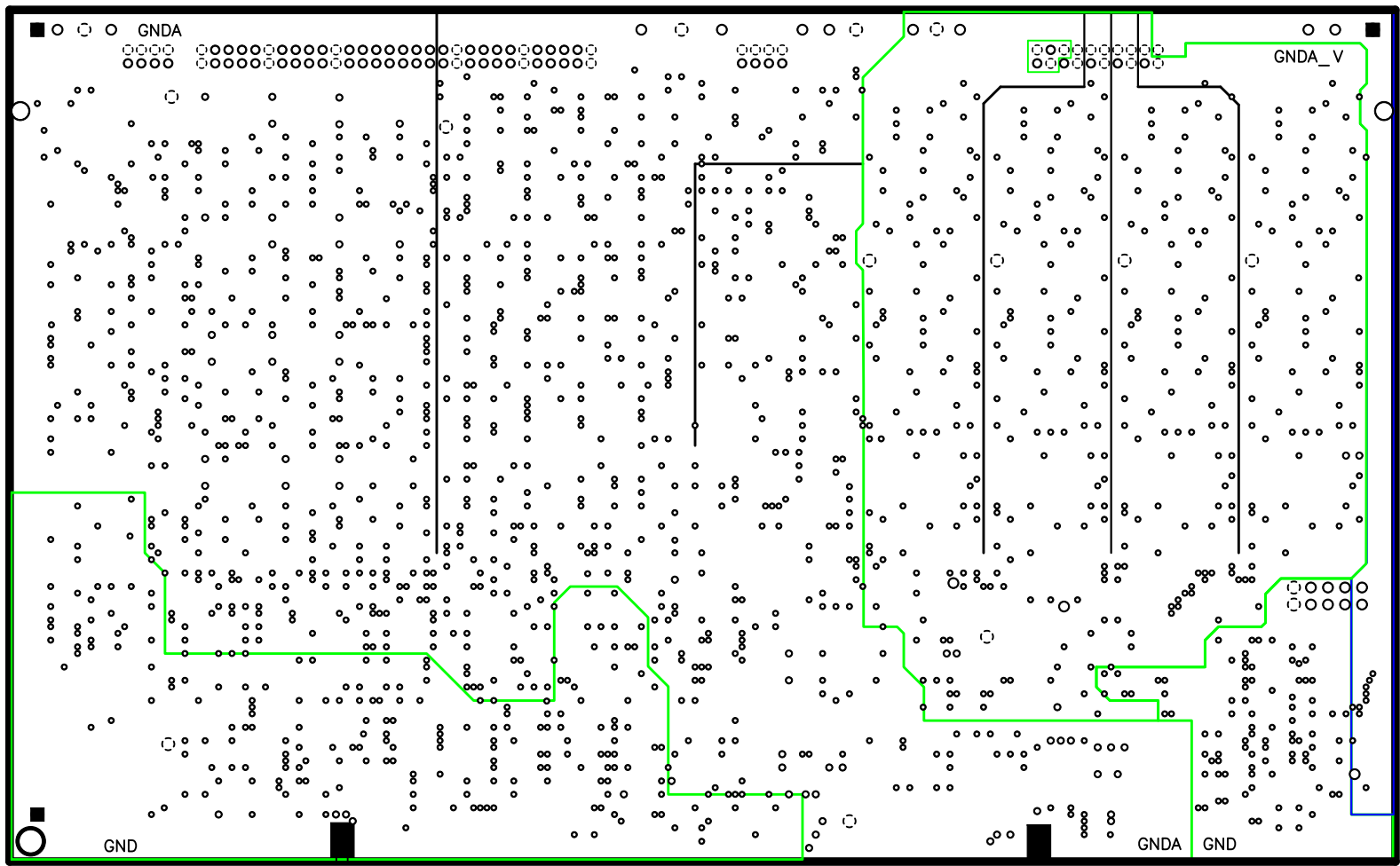


TOP SIDE CONDUCTORS (LAYER-1) PRIMARY
 POSITIVE IMAGE WHEN BOX IS FILLED ■

National Optical Astronomy Observatory
 Drawing Number: TRNT-EL-04-3004 Rev C
 Next Assy: TRNT-EL-04-1004
 TORRENT AFE CCD

18OCT11 SH 1 of 14

APPROVED FOR
 CONSTRUCTION
 10-20-11 DMS

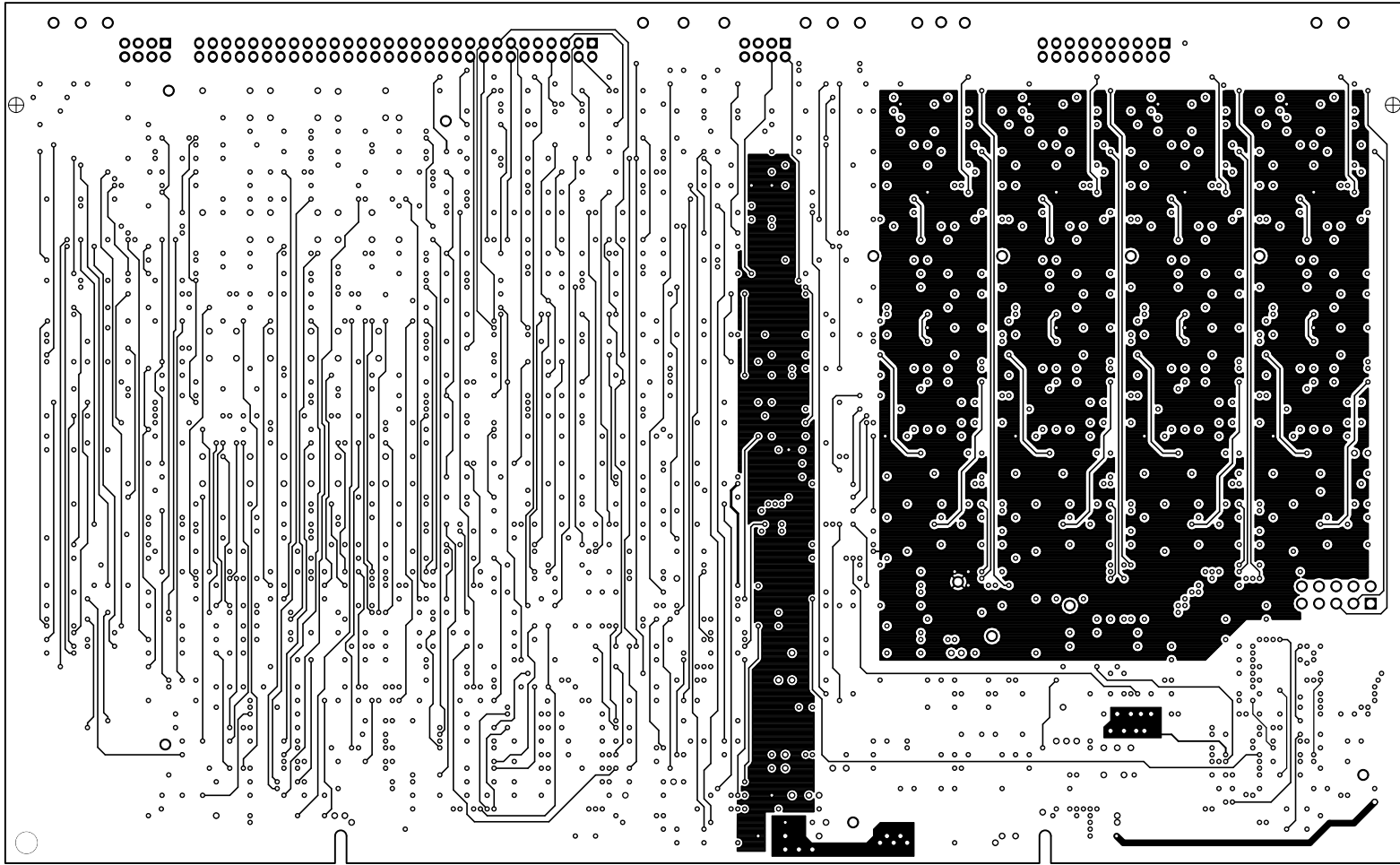


PLANE LAYER GROUND (LAYER-2)
 POSITIVE IMAGE WHEN BOX IS FILLED

National Optical Astronomy Observatory
 Drawing Number: TRNT-EL-04-3004 Rev C
 Next Assy: TRNT-EL-04-1004
 TORRENT AFE CCD

18OCT11 SH 2 of 14

APPROVED FOR
 CONSTRUCTION
 10-20-11 DMS

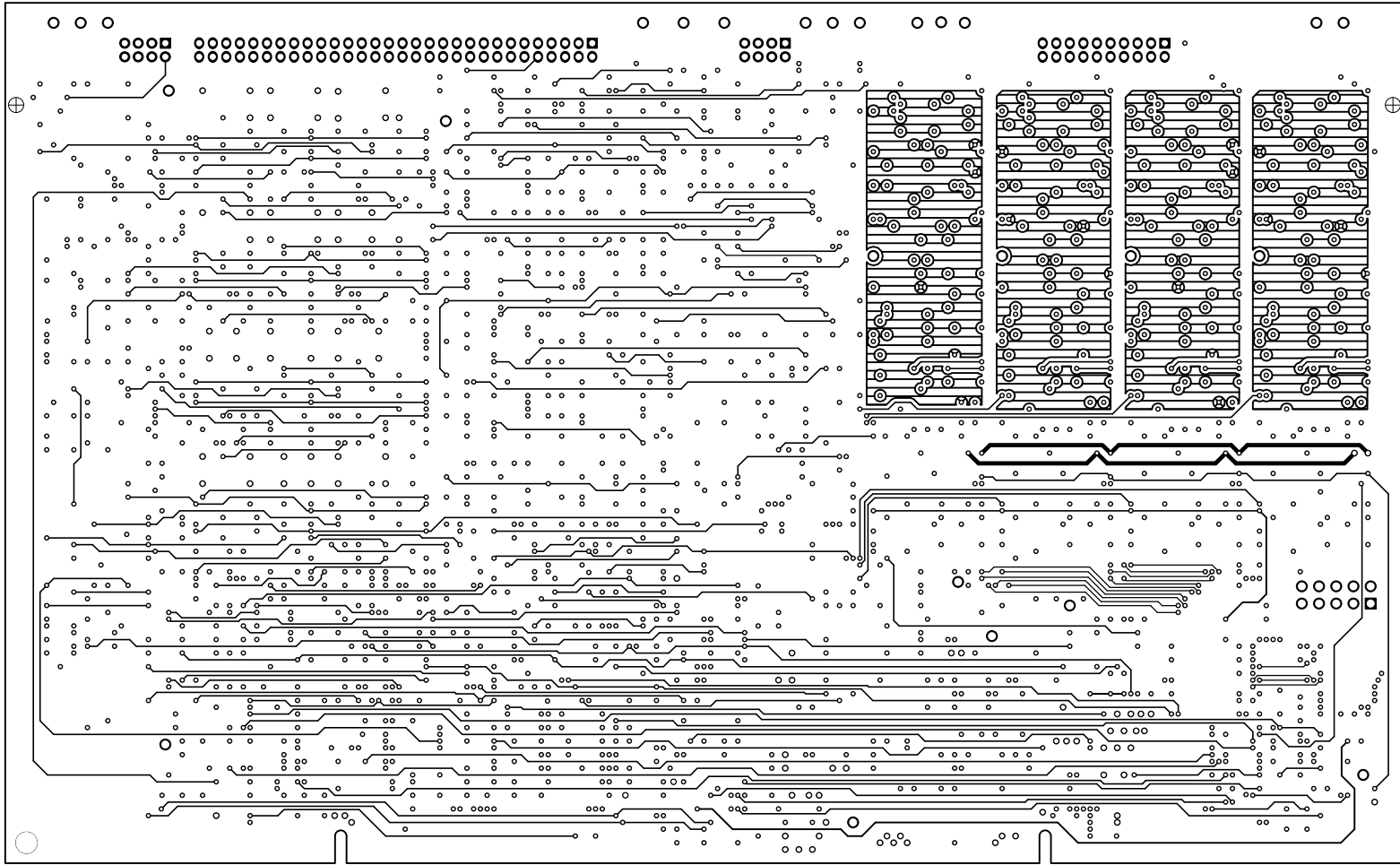


CONDUCTORS INTERNAL (LAYER-3)
POSITIVE IMAGE WHEN BOX IS FILLED ■

National Optical Astronomy Observatory
Drawing Number: TRNT-EL-04-3004 Rev C
Next Assy: TRNT-EL-04-1004
TORRENT AFE CCD

18OCT11 SH 3 of 14

APPROVED FOR
CONSTRUCTION
10-20-11 DMS

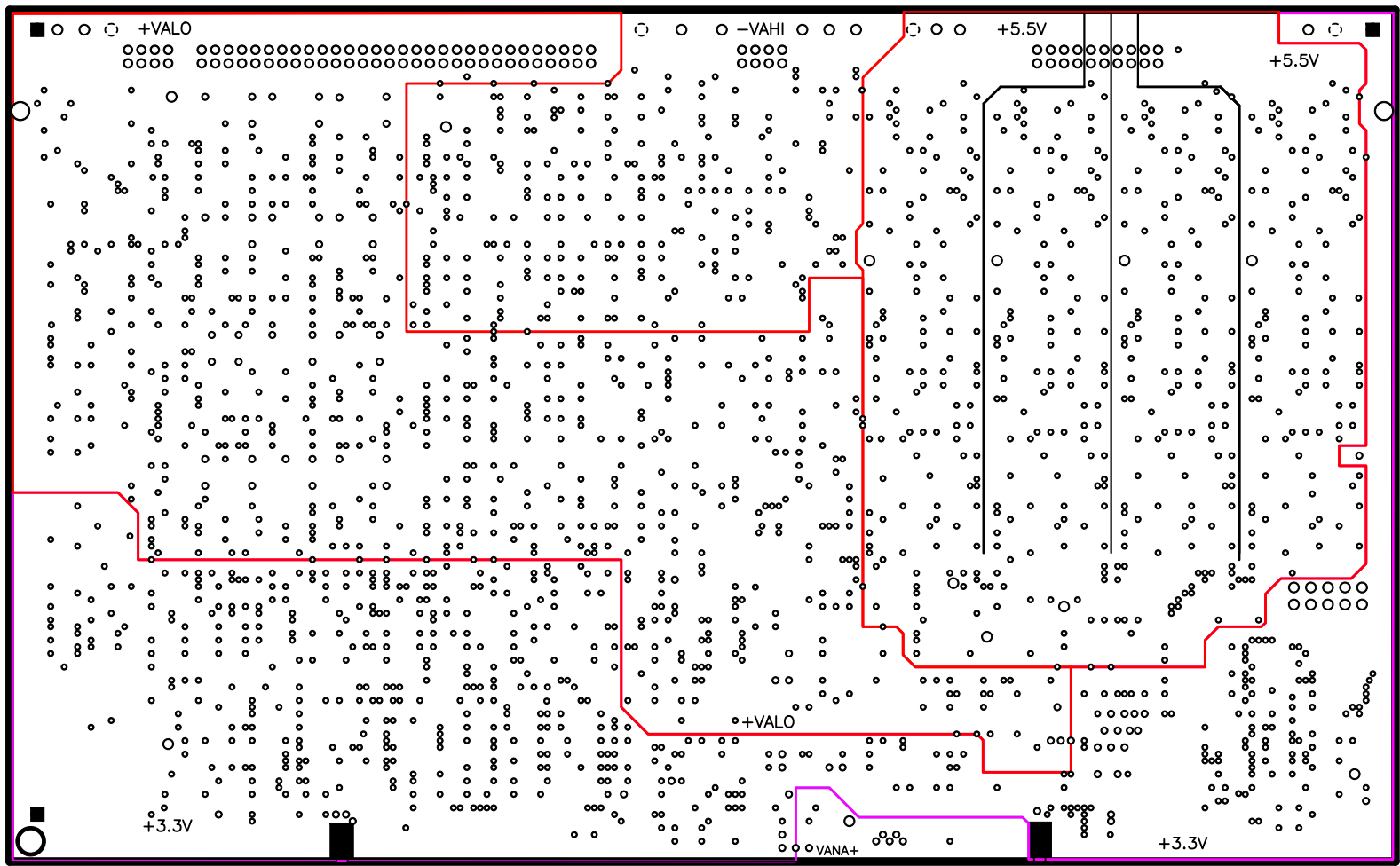


CONDUCTORS INTERNAL (LAYER-4)
POSITIVE IMAGE WHEN BOX IS FILLED ■

National Optical Astronomy Observatory
Drawing Number: TRNT-EL-04-3004 Rev C
Next Assy: TRNT-EL-04-1004
TORRENT AFE CCD

18OCT11 SH 4 of 14

APPROVED FOR
CONSTRUCTION
10-20-11 DMS

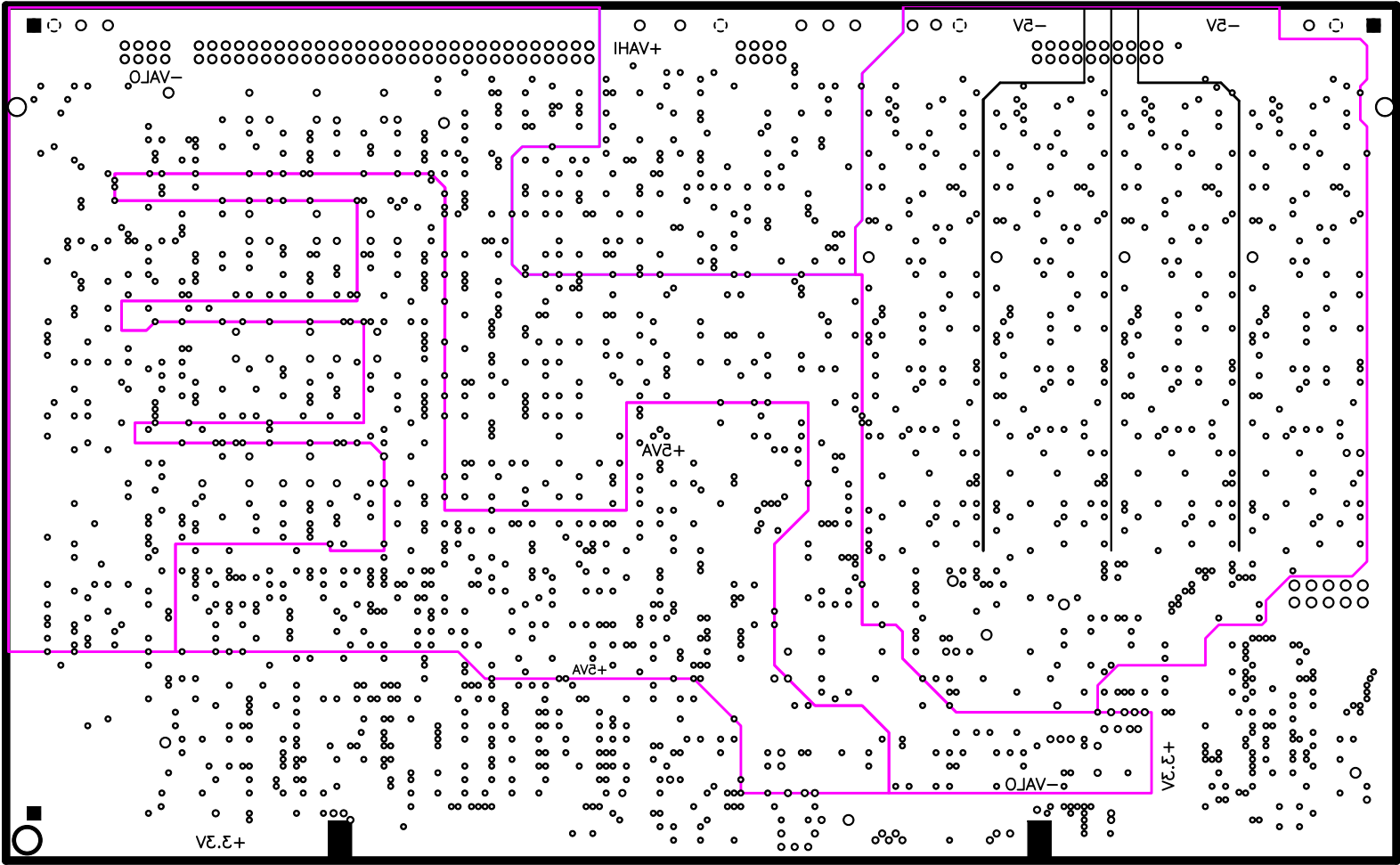


PLANE LAYER MIXED (LAYER-5)
 POSITIVE IMAGE WHEN BOX IS FILLED

National Optical Astronomy Observatory
 Drawing Number: TRNT-EL-04-3004 Rev C
 Next Assy: TRNT-EL-04-1004
 TORRENT AFE CCD

18OCT11 SH 5 of 14

APPROVED FOR
 CONSTRUCTION
 10-20-11 DMS

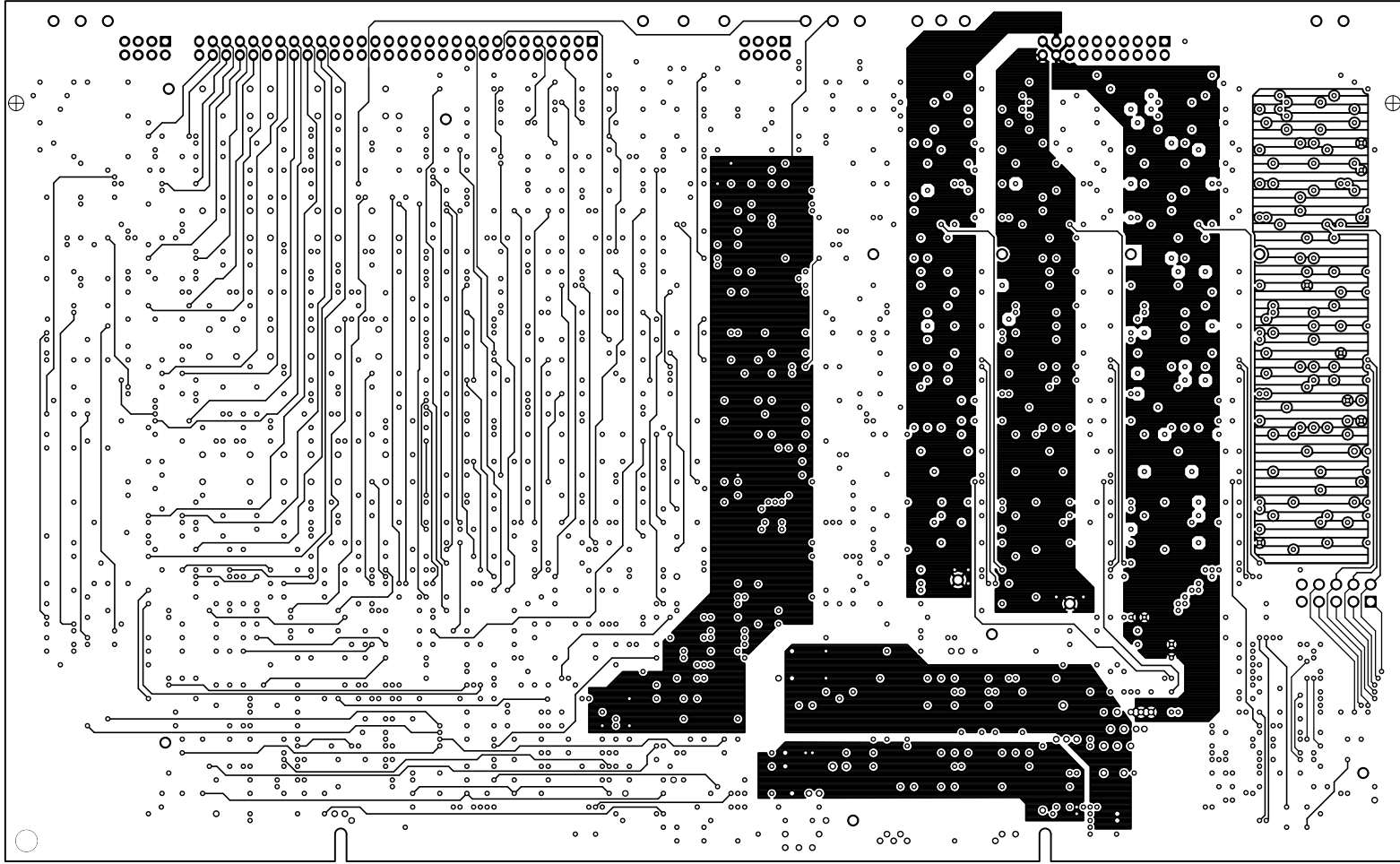


PLANE LAYER GROUND (LAYER-8)
 POSITIVE IMAGE WHEN BOX IS FILLED

National Optical Astronomy Observatory
 Drawing Number: TRNT-EL-04-3004 Rev C
 Next Assy: TRNT-EL-04-1004
 TORRENT AFE CCD

18OCT11 SH 6 of 14

APPROVED FOR
 CONSTRUCTION
 10-20-11 DMS

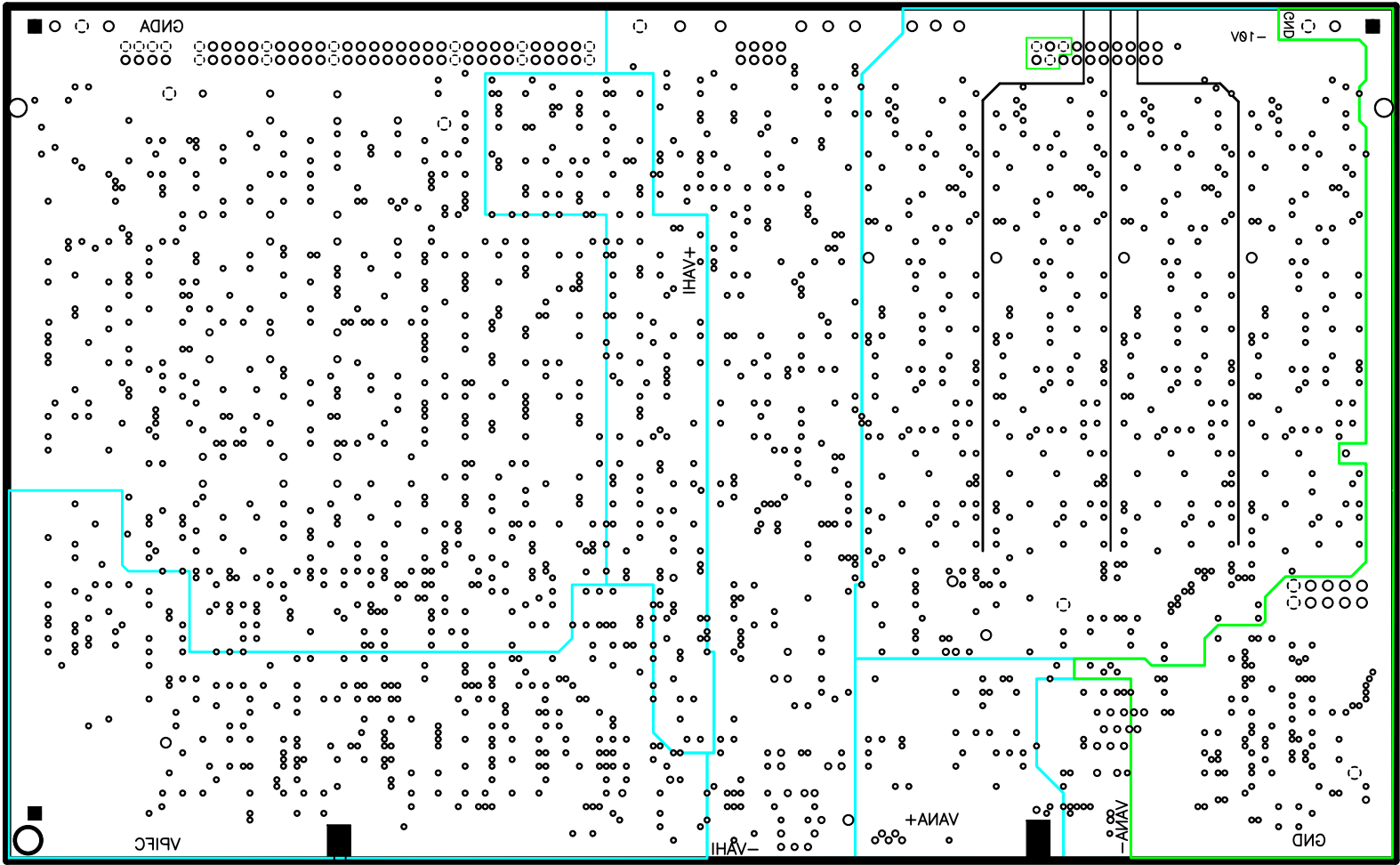


CONDUCITOR INTERNAL (LAYER 7)
POSITIVE IMAGE WHEN BOX IS FILLED

National Optical Astronomy Observatory
Drawing Number: TRNT-EL-04-3004 Rev C
Next Assy: TRNT-EL-04-1004
TORRENT AFE CCD

18OCT11 SH 7 of 14

APPROVED FOR
CONSTRUCTION
10-20-11 DMS

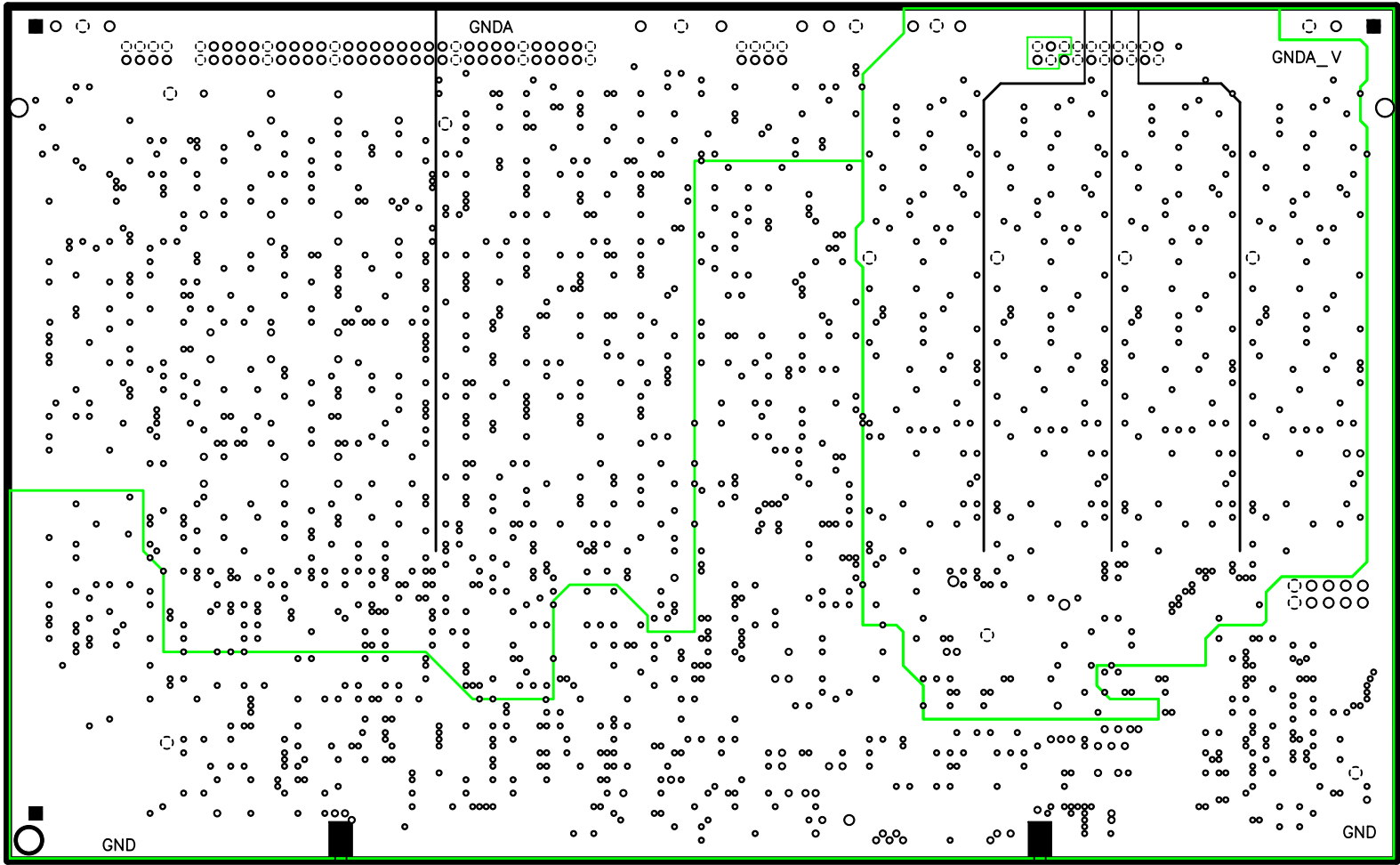


(8-REYA) PLANE LAYER (LAYER-8)
 POSITIVE IMAGE WHEN BOX IS FILLED

National Optical Astronomy Observatory
 Drawing Number: TRNT-EL-04-3004 Rev C
 Next Assy: TRNT-EL-04-1004
 TORRENT AFE CCD

18OCT11 SH 8 of 14

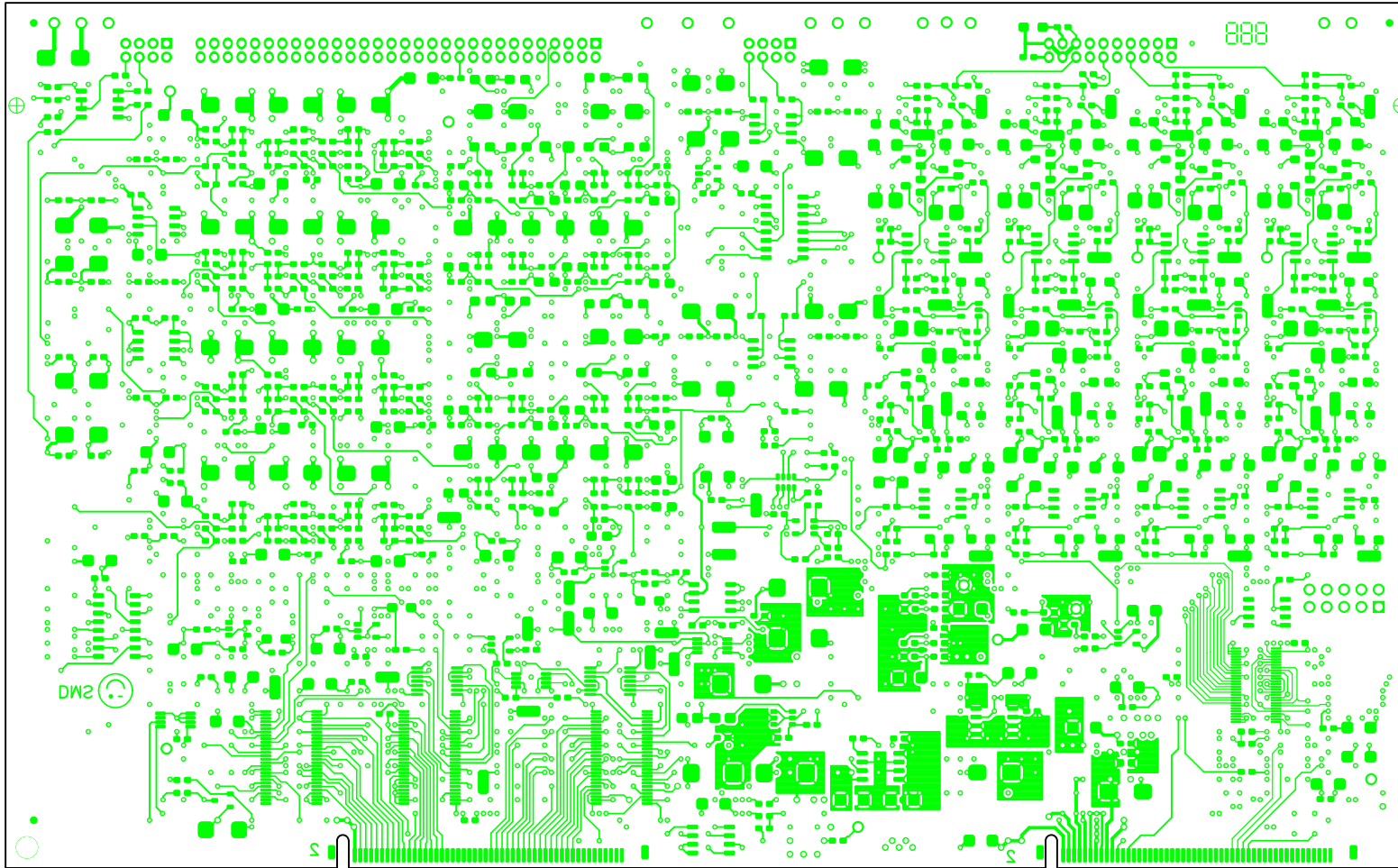
APPROVED FOR
 CONSTRUCTION
 10-20-11 DMS



(e-3EYAJ) INUORG REYAJ ENAIP
 POSITIVE IMAGE WHEN BOX IS FILLED

National Optical Astronomy Observatory
 Drawing Number: TRNT-EL-04-3004 Rev C
 Next Assy: TRNT-EL-04-1004
 TORRENT AFE CCD 18OCT11 SH 9 of 14

APPROVED FOR
 CONSTRUCTION
 10-20-11 DMS

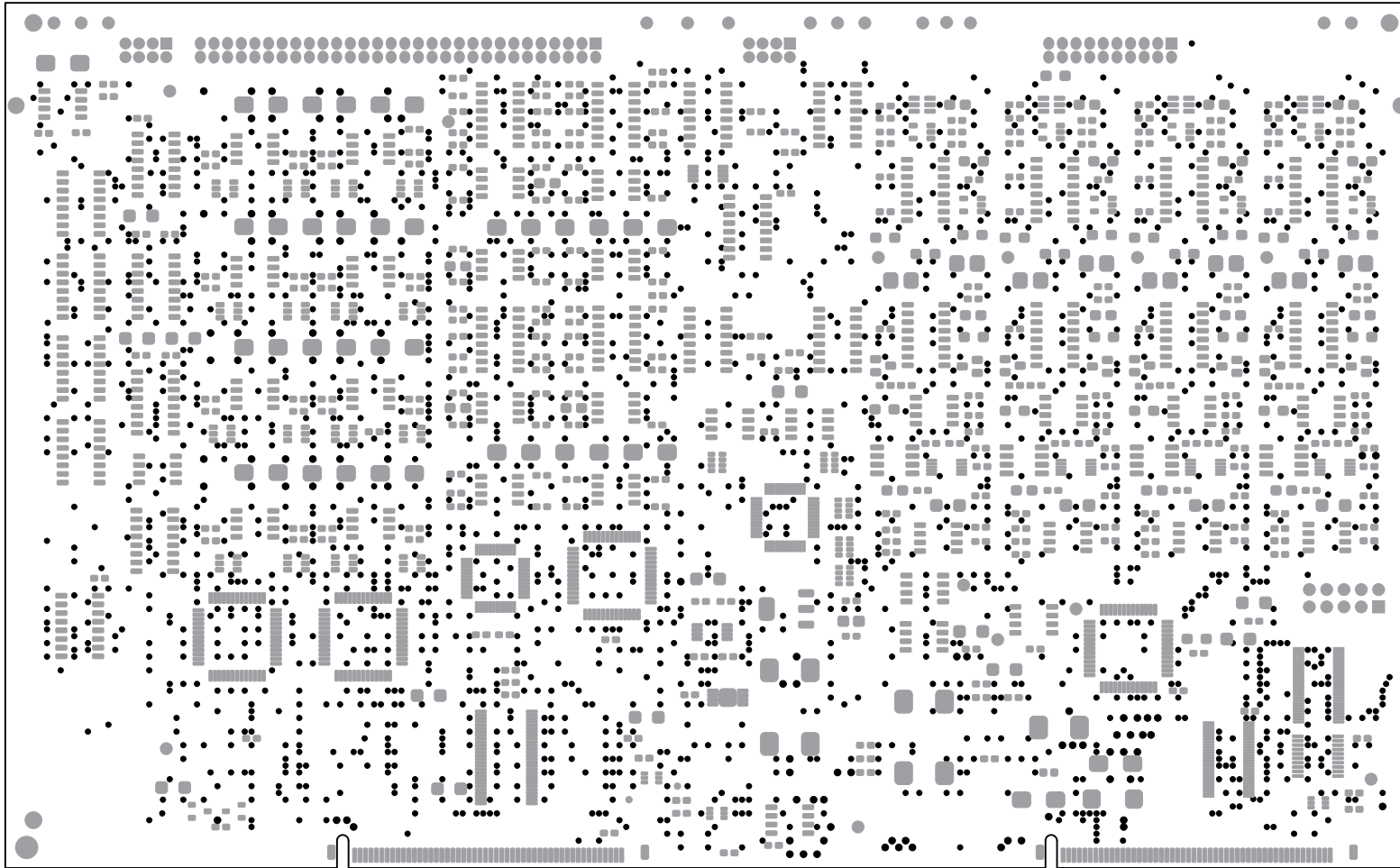


(10) BOTTOM SIDE CONDUCTORS (LAYER-10)
POSITIVE IMAGE WHEN BOX IS FILLED ■

National Optical Astronomy Observatory
Drawing Number: TRNT-EL-04-3004 Rev C
Next Assy: TRNT-EL-04-1004
TORRENT AFE CCD

18OCT11 SH 10 of 14

APPROVED FOR
CONSTRUCTION
10-20-11 DMS



TOP SIDE SOLDERMASK (LAYER-1M) PRIMARY
POSITIVE IMAGE WHEN BOX IS FILLED

National Optical Astronomy Observatory
Drawing Number: TRNT-EL-04-3004 Rev C
Next Assy: TRNT-EL-04-1004
TORRENT AFE CCD 18OCT11 SH 11 of 14

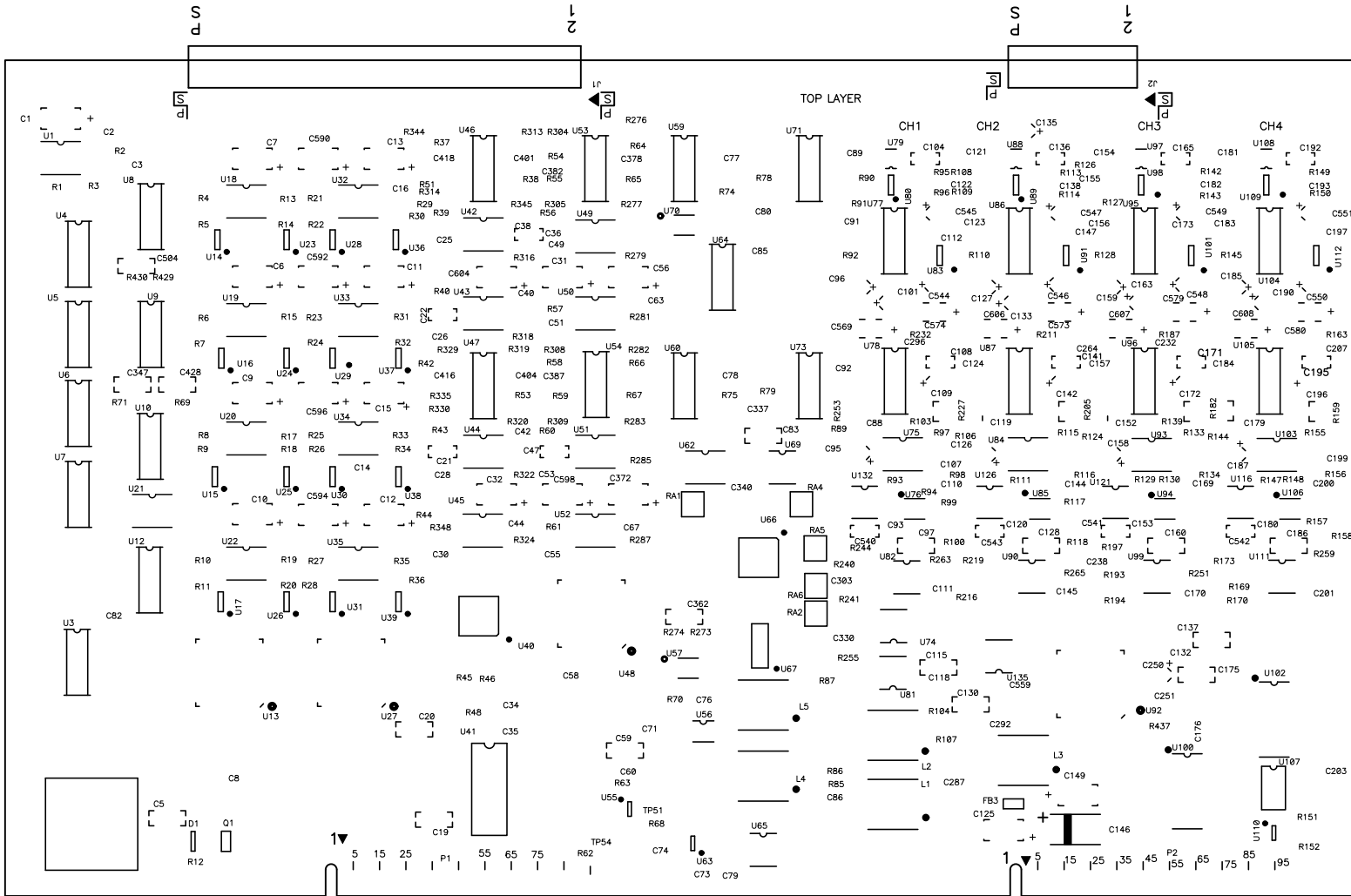
APPROVED FOR
CONSTRUCTION
10-20-11 DMS



202DL02 (M01-RYA) MOTTOK K2AMRZK (LAYER-10) SECONDARY
POSITIVE IMAGE WHEN BOX IS FILLED

National Optical Astronomy Observatory
Drawing Number: TRNT-EL-04-3004 Rev C
Next Assy: TRNT-EL-04-1004
TORRENT AFE CCD 18OCT11 SH 12 of 14

APPROVED FOR
CONSTRUCTION
10-20-11 DMS



SILKSCREEN TOP (LAYER-1S) PRIMARY
 POSITIVE IMAGE WHEN BOX IS FILLED ■

National Optical Astronomy Observatory
 Drawing Number: TRNT-EL-04-3004 Rev C
 Next Assy: TRNT-EL-04-1004
 TORRENT AFE CCD

180CT11 SH 13 of 14

APPROVED FOR
 CONSTRUCTION
 10-20-11 DMS



YRAN03E2 (201-100) (LAYER-100) SECONDARY
 POSITIVE IMAGE WHEN BOX IS FILLED ■

National Optical Astronomy Observatory
 Drawing Number: TRNT-EL-04-3004 Rev C
 Next Assy: TRNT-EL-04-1004
 TORRENT AFE CCD

180CT11 SH 14 of 14

APPROVED FOR
 CONSTRUCTION
 10-20-11 DMS