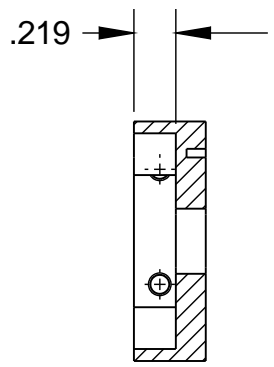
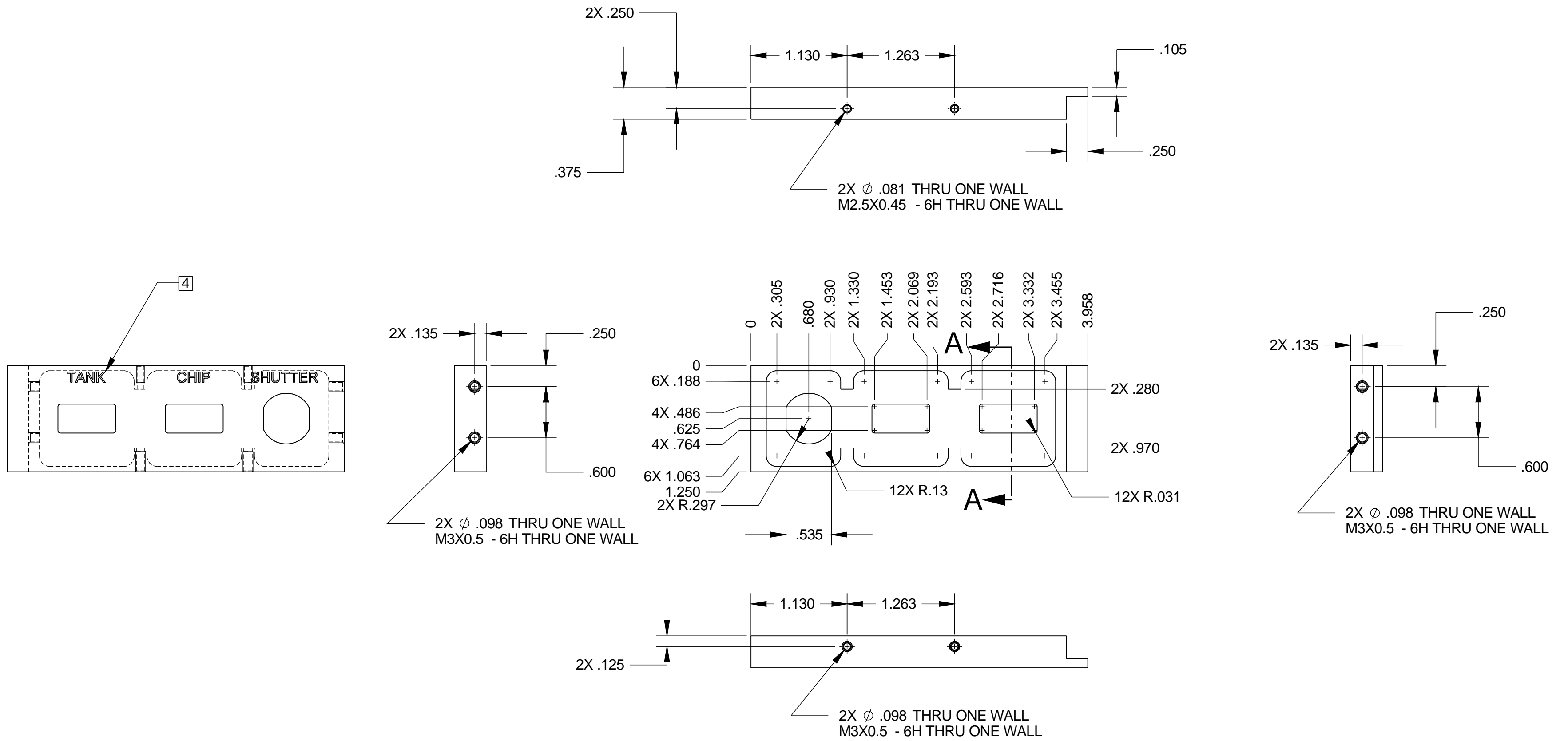


NOTES:

1. DIMENSIONS IN INCHES.
2. BREAK EDGES .02 MAX.
3. ELECTROLESS NICKEL PLATE PER ASTM B733-04 TYPE V (10% MIN PHOSPHORUS), SC1 (.0002" THK), CLASS 4.
4. ENGRAVE APPROX. AS SHOWN. APPROX. LETTER HEIGHT OF .125. FILL WITH BLUE EPOXY PAINT.

| ZONE | REV | DESCRIPTION | BY | DATE | APV BY |
|-----------|-----|------------------------|-----|-----------|--------|
| | B | ADD ENGRAVING & NOTE 4 | MDK | 9/19/2011 | |
| | A | 2X M2.5 WAS 2X M3 | JD | 1/14/2011 | |
| | - | INITIAL RELEASE | JD | 7/12/2010 | |
| REVISIONS | | | | | |



SECTION A-A

| | | | |
|---|--|--|--|
| MATERIAL : ALUMINUM ALLOY 6061-T6 | | | |
| TOLERANCES UNLESS OTHERWISE NOTED .XX ± .01 .XXX ± .005 | | ANGULAR ± .1° | |
| DO NOT SCALE DRAWING | | THIRD ANGLE PROJECTION | |
| NEXT ASSEMBLY TRNT-EL-02-0006 | | NAME TRANSITION MODULE SIDE PLATE, LEFT | |
| SCALE: 1:1 | | DESIGNED BY: RATH / DeVRIES | |
| DWG PRODUCED USING SOLIDWORKS 2010 | | CHECKED BY: XXX | |
| DRAWN BY: XXX | | APPROVED BY: XXX | |
| DRAWING NUMBER TRNT-EL-02-1025 | | USED ON TORRENT | |
| DWG SIZE C | | REV B | |
| RELEASE DATE: | | SHEET: 1 OF 1 | |

| ITEM | WEIGHT (Lbs) |
|-------------------|--------------|
| -1 | |
| CALCULATED WEIGHT | |