
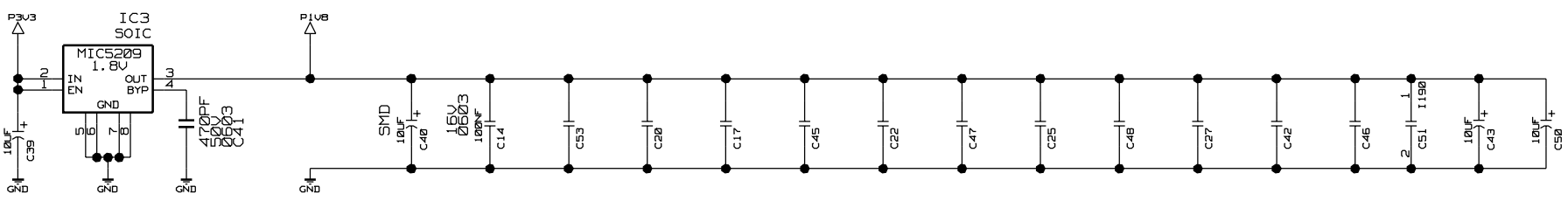
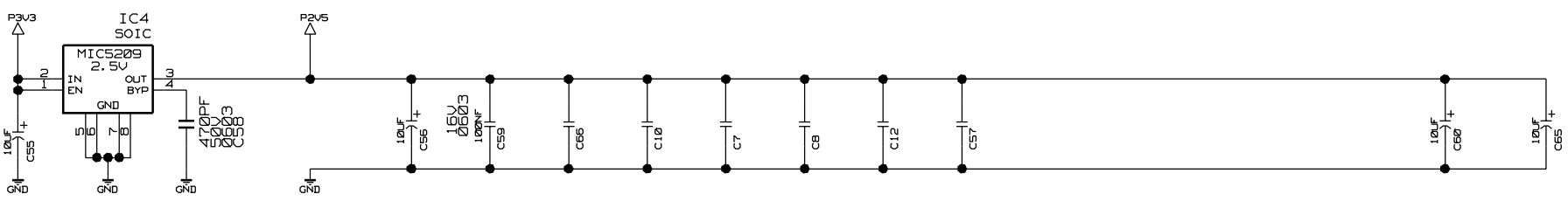
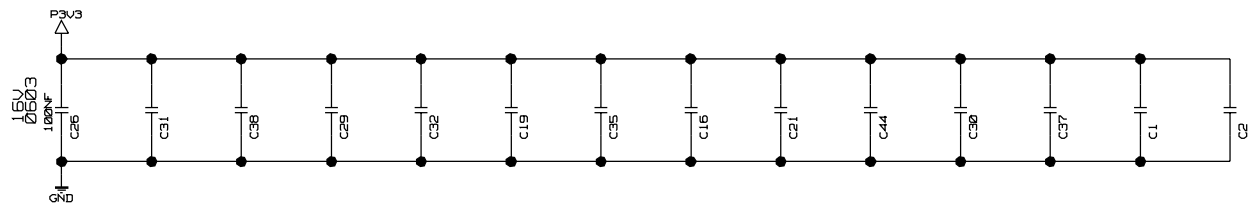
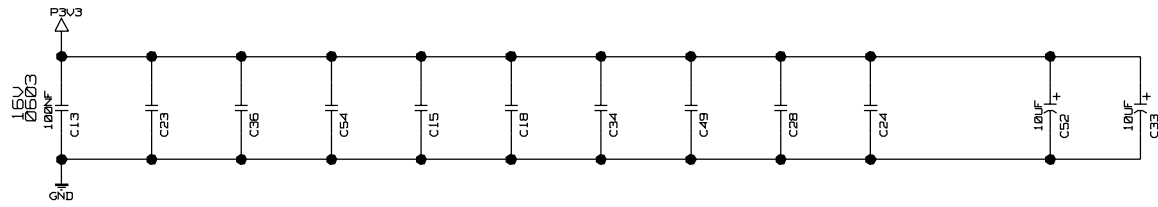



NOTES: 10-PIN CONNECTOR HOLTITE SOCKET
MOUNT EITHER EPC1441 OR EPC2

EDMS REF: 330900		VERSION: 2		PCB: EP 680-1169-250-B		SYSTEM:	
REF: DRAWING				TITLE: HOLA		HIGH-SPEED OPTICAL LINK FOR ATLAS	
 Div. EP 1211 GENEVA 23 SWITZERLAND				ABBREV: HOLA		PAGE: 3 OF 4	
				LAST_MODIFIED= Tue Oct 8 17:46:05 2002			
IT/CE		DESSIN: A. RUIZ		ETUDE:		DATE: 6-03-02	



EDMS REF: 330900	VERSION: 2	PCB: EP 680-1169-250-B	SYSTEM:
REF: DRAWING	TITLE: HOLA		HIGH-SPEED OPTICAL LINK FOR ATLAS
 DIV. EP 1211 GENEVA 23 SWITZERLAND	ABBREV: HOLA	PAGE: 4 OF 4	
	LAST_MODIFIED= Tue Oct 8 17:46:10 2002		
IT/CE	DESSIN: A. RUIZ	ETUDE:	DATE: 6-03-02