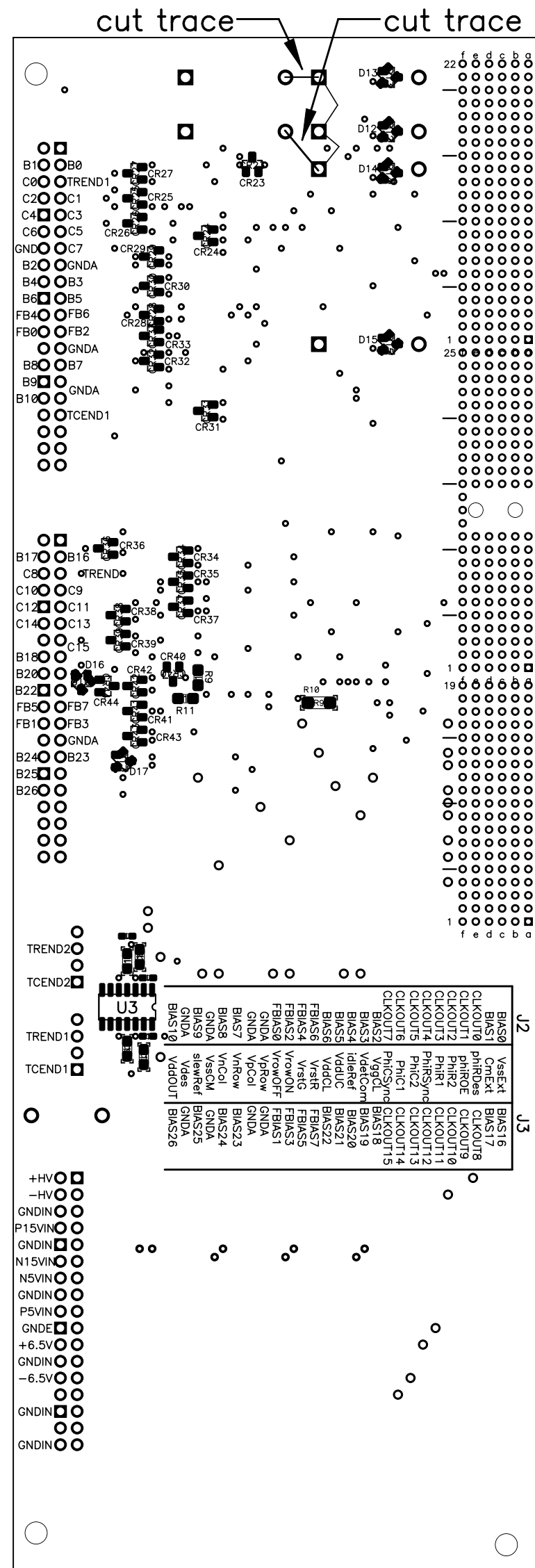
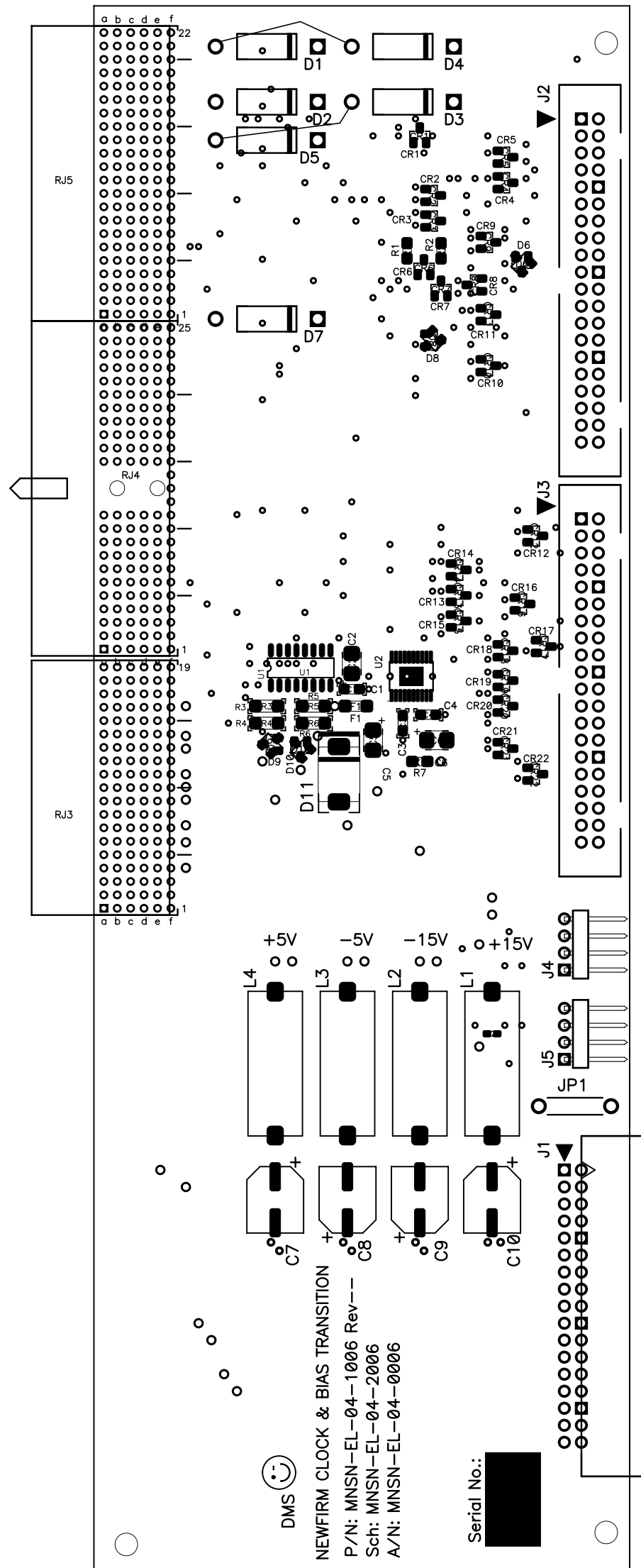


REVISIONS						
ZONE	LTR	REVISIONS	ECR	DATE	BY	APRV
	-1	Note 5, 6 & 7, Detail A.		20sep04	dms	

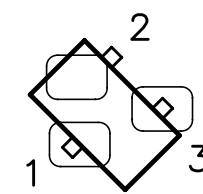


NOTES:

- Before installing any components check all boards using an ohm meter for shorts between all power and ground nodes.
- All polarized caps are marked with a (+) sign on the positive node.
- All diodes have a heavy line on the cathode side.
- All holes and land of uninstalled components shall be kept free of solder.
- All ZHCS1006 should be oriented on pads as shown in Detail A.  
D6, D8, D9, D10, D12, D13, D14, D15, D16, D17
- R8, erroneously placed under L1.
- Cut trace connect D1-K to D4-A and D5-K to D3-A.

Wire adds

- D5-K to D2-K (GNDA) bottom of board 30 awg black
- D1-K to D2-K (GNDA) bottom of board 30 awg black
- D5-A to D3-A (Bias7) Top of board 30 awg white
- D1-A to D4-A (Bias23) Top of board 30 awg white



DETAIL A

Pins 1 & 3 must make contact with lands, pin 2 is not connected

Modified Date: Mon Sep 20, 2004  
Print Date: Thu Mar 23, 2006

QTY REQ'D	PART OR IDENTIFYING NO	ITEM DESCRIPTION	ITEM NO
TOLERANCES UNLESS OTHERWISE NOTED .XX ± .03 .XXX ± .010		 THIRD ANGLE PROJECTION	<b>NATIONAL OPTICAL ASTRONOMY OBSERVATORIES</b> <small>OPERATED BY THE ASSOCIATION OF UNIVERSITIES FOR RESEARCH IN ASTRONOMY UNDER COOPERATIVE AGREEMENT WITH NATIONAL SCIENCE FOUNDATION</small>
DO NOT SCALE DRAWING			
NEXT ASSEMBLY NFM-EL-??-????		NAME <b>ASSEMBLY NEWFIRM CLOCK &amp; BIAS TRANSITION BOARD</b>	USED ON NEWFIRM
REFER TO SCHEMATIC NFM-EL-04-2006		DWG SIZE C	REV -1
SCALE: FULL	DESIGNED BY D. Stover	DATE	CHECKED BY
DWG PRODUCED USING PCAD2001	DRAWN BY Dee Stover	DATE 20SEP04	APPROVED BY
DWG NO NFM-EL-04-0006		RELEASED	SHEET 1 OF 1