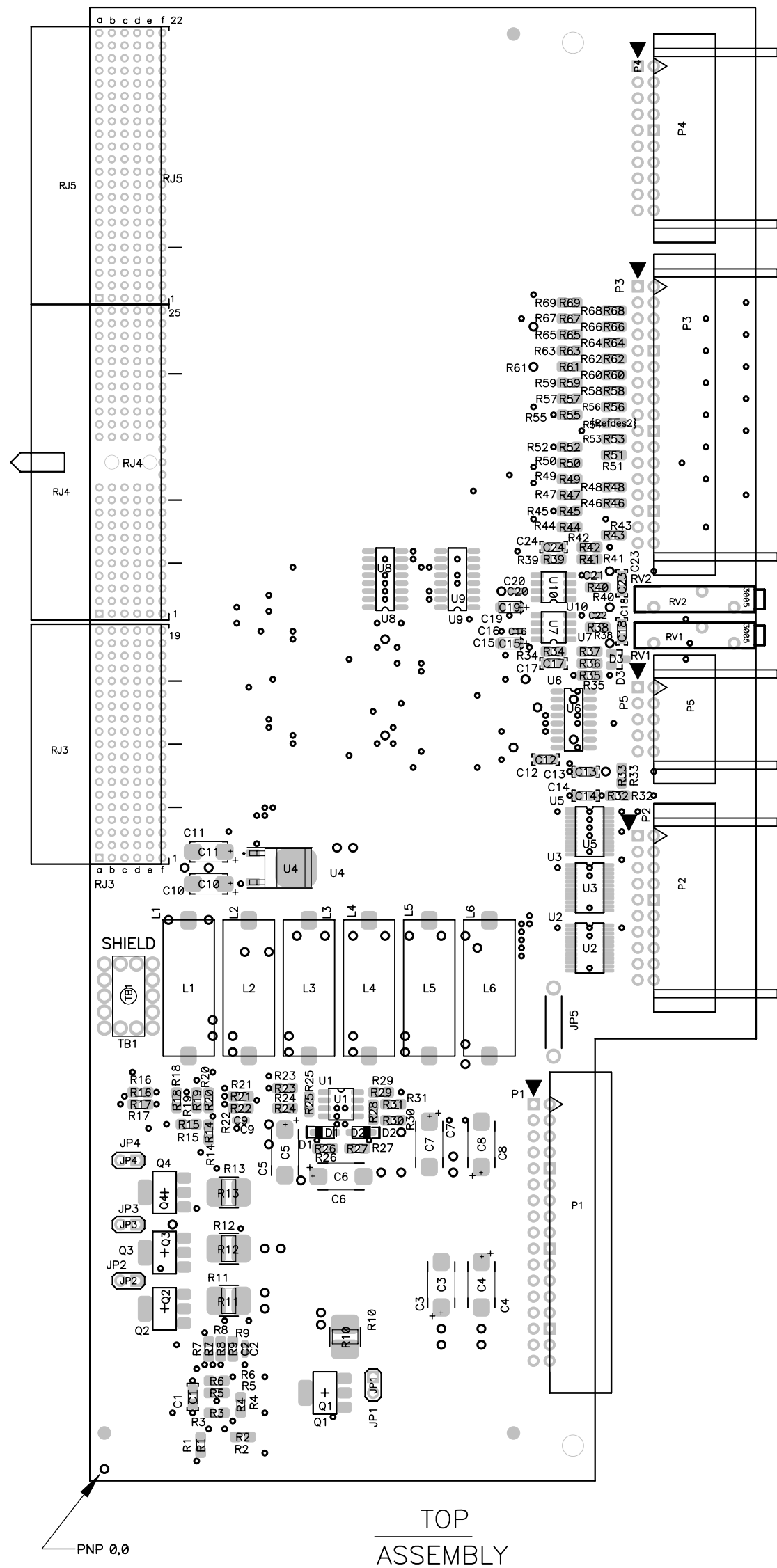
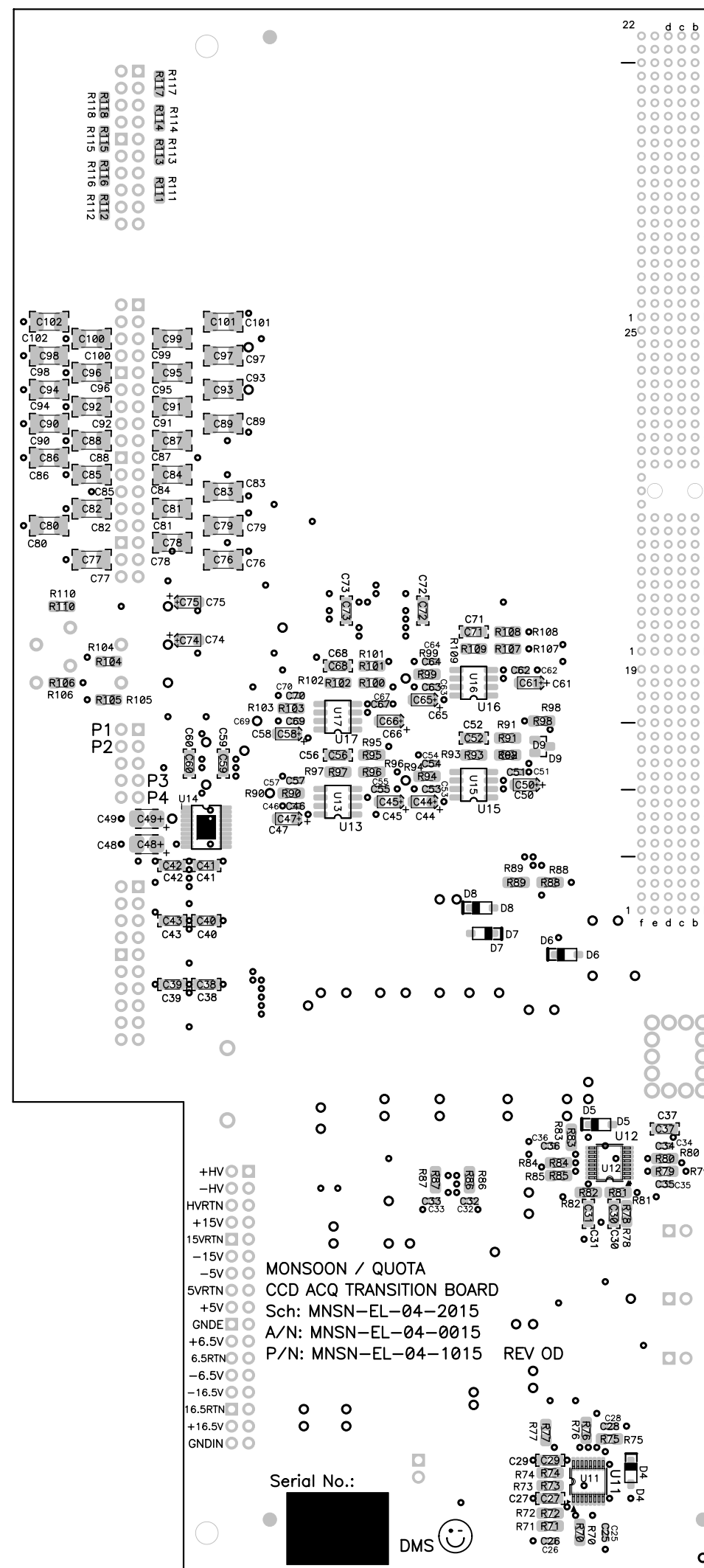


REVISIONS

ZONE	LTR	REVISIONS	ECR	DATE	BY	APRV
	OD	INITIAL RELEASE		04DEC06	dms	p.moore



TOP ASSEMBLY



BOTTOM ASSEMBLY

MONSOON / QUOTA
 CCD ACQ TRANSITION BOARD
 Sch: MNSN-EL-04-2015
 A/N: MNSN-EL-04-0015
 P/N: MNSN-EL-04-1015 REV OD

Serial No.:

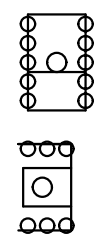
DMS

NOTES:

1. Reference MNSN-EL-04-4015 Bill of Materials
2. Before installing any components check all boards using an ohm meter for shorts between all power and ground nodes.
3. All polarized caps are marked with a (+) sign on the positive node.
4. All diodes have a heavy line on the cathode side.
5. Parts can be crossed as long as the replacement is the same or an upgrade of the specified part.
6. Resistance values are in ohms, capacitance values are in uF (microfarads).
7. Make sure all axial leaded components are inserted with the value up and readable.
8. Holes and/or lands of components that are not installed should be kept free of solder.
9. This assembly contains electrostatic discharge (ESD) sensitive devices. Static free handling is required.
10. rJ3, rJ4, rJ5 are press fit connectors and SHALL be soldered in place to ensure connectivity.
11. TB1 can be a 10 pin, 6 pin or 4 pin part. With card positioned as shown in top assembly view the 10 pin orientation will use pins to the left and right, 4 & 6 pin orientation will use the pins located towards top and bottom of card.

APPROVED FOR CONSTRUCTION 12-04-06

VENDOR NOTE: NOTIFY US OF ANY CONFLICTING REQUIREMENTS OR IF BOARDS CANNOT BE MANUFACTURED TO MEET THE ABOVE REQUIREMENTS, DUE TO VENDORS PROCESS AND/OR TECHNIQUES OR BECAUSE PHOTO TOOLS AND/OR SPECIFICATIONS ARE INADEQUATE.



TB1 ORIENTATION

QTY REQ'D	PART OR IDENTIFYING NO	ITEM DESCRIPTION	ITEM NO
TOLERANCES UNLESS OTHERWISE NOTED .XX ± .03 .XXX ± .010		<p>THIRD ANGLE PROJECTION</p>	<p>NATIONAL OPTICAL ASTRONOMY OBSERVATORIES</p> <p>OPERATED BY THE</p> <p>ASSOCIATION OF UNIVERSITIES FOR RESEARCH IN ASTRONOMY</p> <p>UNDER COOPERATIVE AGREEMENT WITH</p> <p>NATIONAL SCIENCE FOUNDATION</p>
ANGULAR ±.5°			
DO NOT SCALE DRAWING		NAME	USED ON
NEXT ASSEMBLY		ASSEMBLY	MONSOON QUOTA
REFER TO SCHEMATIC		MONSOON / QUOTA	DWG SIZE
MNSN-EL-04-2015		CCD ACQUISITION TRANSITION BRD	C
SCALE: FULL	DESIGNED BY D. Stover	DATE 01nov04	CHECKED BY
DWG PRODUCED USING PCAD2004	DRAWN BY Dee Stover	DATE 15nov04	APPROVED BY
DWG NO MNSN-EL-04-0015		DATE	RELEASED
SHEET 1 OF 1			