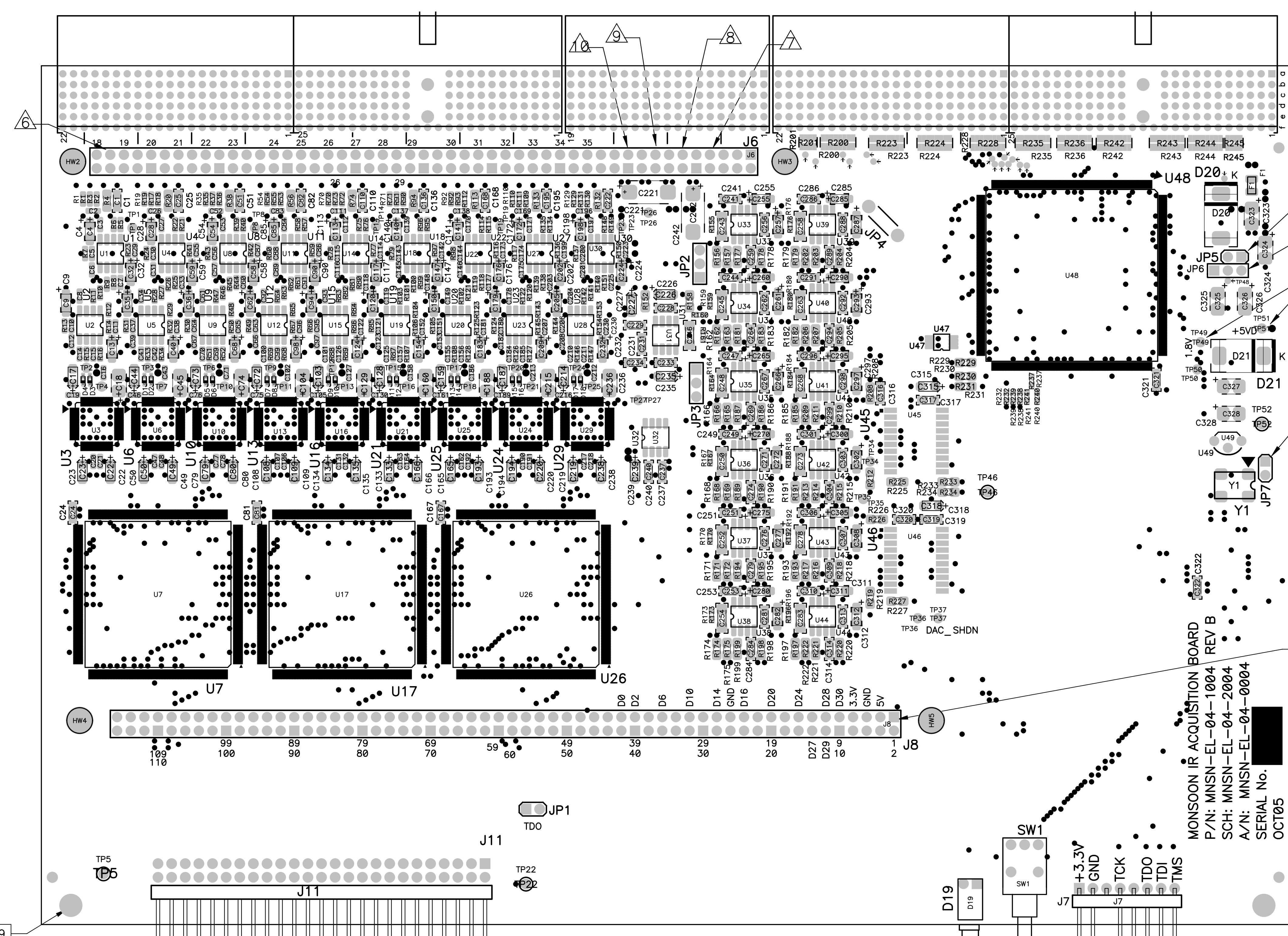


REVISIONS						
ZONE	LTR	REVISIONS	ECR	DATE	BY	APRV
A		correction of many of the errors found on the prototype	devel	Jan04	dms	m.hunten
A1		clean up part orientation markings, add notes for clarity.	devel	May04	dms	dms
B		MAJOR REVISION SEE ECO DOCUMENT	MNSN-0106	17MAY05	dms	jgarcia

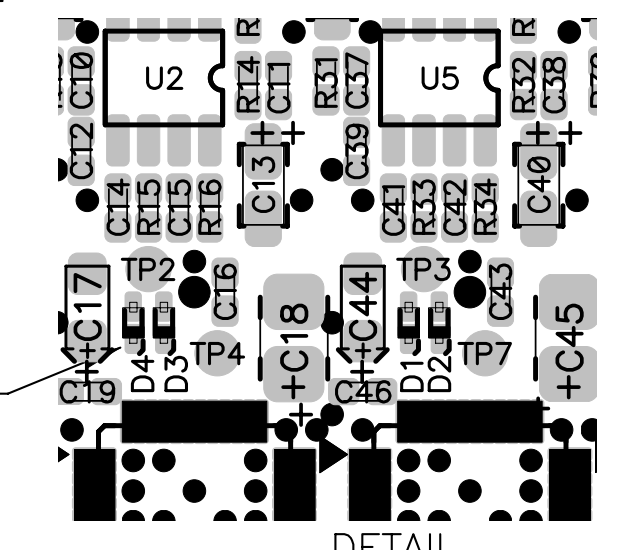


- NOTES:
- Before installing any components check all boards using an ohm meter for shorts between all power and ground nodes. Check all triangle nodes, (labeled Δ - Δ) no shorts should exist between any of these nodes.
 - All polarized caps are marked with a plus (+) sign on the positive node.
 - All holes and lands of uninstalled components should be kept free of solder.
 - Cut pin 3 of J7 to serve as connector key.
 - Diodes have a "K" and/or heavy line marking the cathode.
 - J8 requires a combination of 2 part numbers to complete.
 - JP1, JP2, JP3, JP5, JP6 & JP7 are to be built from a longer header strip, break to size.
 - Trim leads on bottom of board $\leq .079$ inches tall.
 - PNP report origin
 - J1 - J5 are press fit connectors, but shall be soldered in place to ensure connectivity.

MONSOON IR ACQUISITION BOARD
 P/N: MNSN-EL-04-1004 REV B
 SCH: MNSN-EL-04-2004
 A/N: MNSN-EL-04-0004
 SERIAL No. [REDACTED]
 OCT05

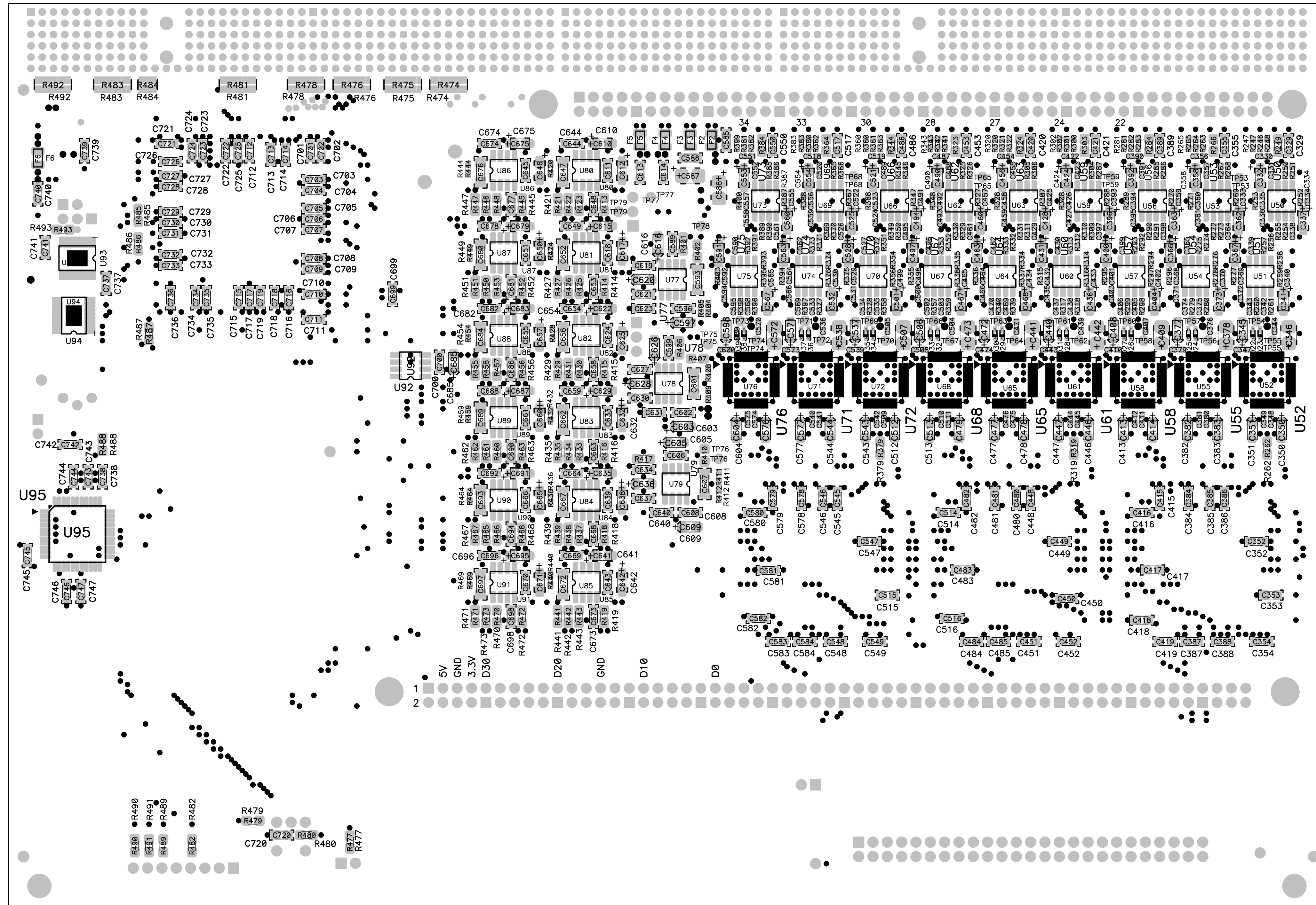
APPROVED FOR
 CONSTRUCTION
 10-13-05

TOP ASSEMBLY



DIODE ORIENTATION
 ALL CHANNELS

TOLERANCES UNLESS OTHERWISE NOTED .XX ± .03 ANGULAR .XXX ± .010 ± 5°		THIRD ANGLE PROJECTION		NATIONAL OPTICAL ASTRONOMY OBSERVATORIES OPERATED BY THE ASSOCIATION OF UNIVERSITIES FOR RESEARCH IN ASTRONOMY UNDER COOPERATIVE AGREEMENT WITH NATIONAL SCIENCE FOUNDATION	
DO NOT SCALE DRAWING		NAME ASSEMBLY DRAWING MONSOON IR ACQ MOTHER BOARD TOP OR PRIMARY SIDE		USED ON MONSOON	REF
NEXT ASSEMBLY MNSN-EL-10-0100		DWG SIZE D		REV B	
SCHEMATIC MNSN-EL-04-2004		FORMERLY MON.3000.0001			
SCALE:	DESIGNED BY Starr/Stover	DATE 31MAY02	CHECKED BY	DATE	DWG NO MNSN-EL-04-0004
DWG PRODUCED USING PCAD 2004	DRAWN BY Dee Stover	DATE 19JUN02	APPROVED BY	DATE	RELEASED
					SHEET 1 OF 2



BOTTOM ASSEMBLY

APPROVED FOR
CONSTRUCTION
10-13-05

TOLERANCES UNLESS OTHERWISE NOTED .XX ± .03 .XXX ± .010		ANGULAR ± 5°		THIRD ANGLE PROJECTION		NATIONAL OPTICAL ASTRONOMY OBSERVATORIES OPERATED BY THE ASSOCIATION OF UNIVERSITIES FOR RESEARCH IN ASTRONOMY UNDER COOPERATIVE AGREEMENT WITH NATIONAL SCIENCE FOUNDATION	
DO NOT SCALE DRAWING		NAME ASSEMBLY DRAWING		USED ON MONSOON		REF	
NEXT ASSEMBLY MNSN-EL-10-0100		MONSOON IR ACQ MOTHER BOARD		DWG SIZE D		REV B	
SCHEMATIC MNSN-EL-04-2004		BOTTOM OR SECONDARY SIDE					
SCALE:	DESIGNED BY Starr/Stover	DATE 31MAY02	CHECKED BY	DATE	DWG NO	MNSN-EL-04-0004	
DWG PRODUCED USING PCAD 2004	DRAWN BY Dee Stover	DATE 19JUN02	APPROVED BY	DATE	RELEASED	SHEET 2 OF 2	
Tue Jan 24, 2006							