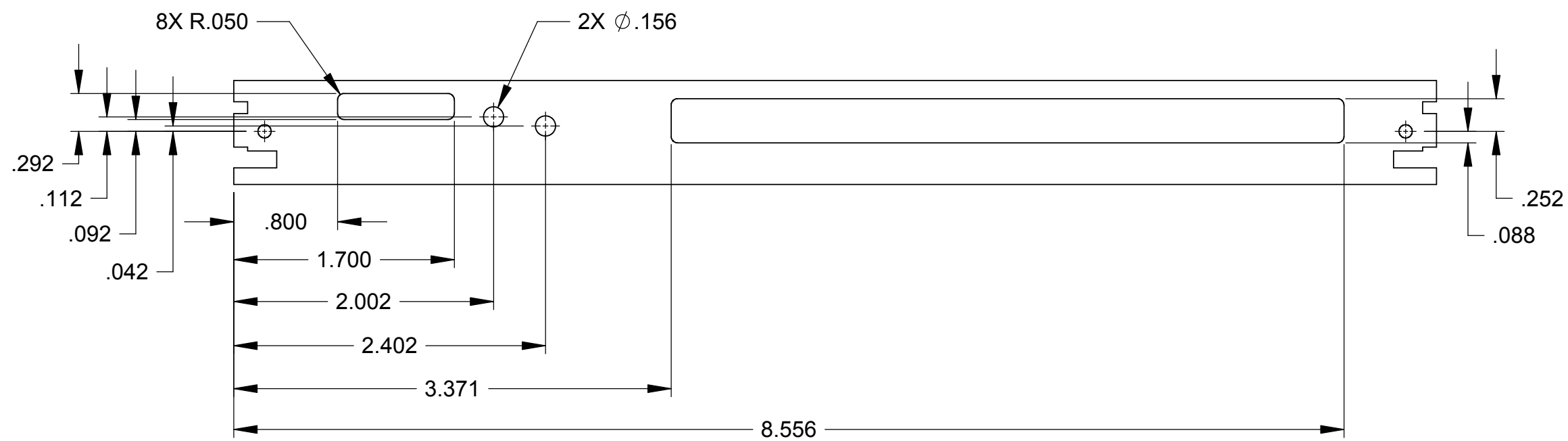
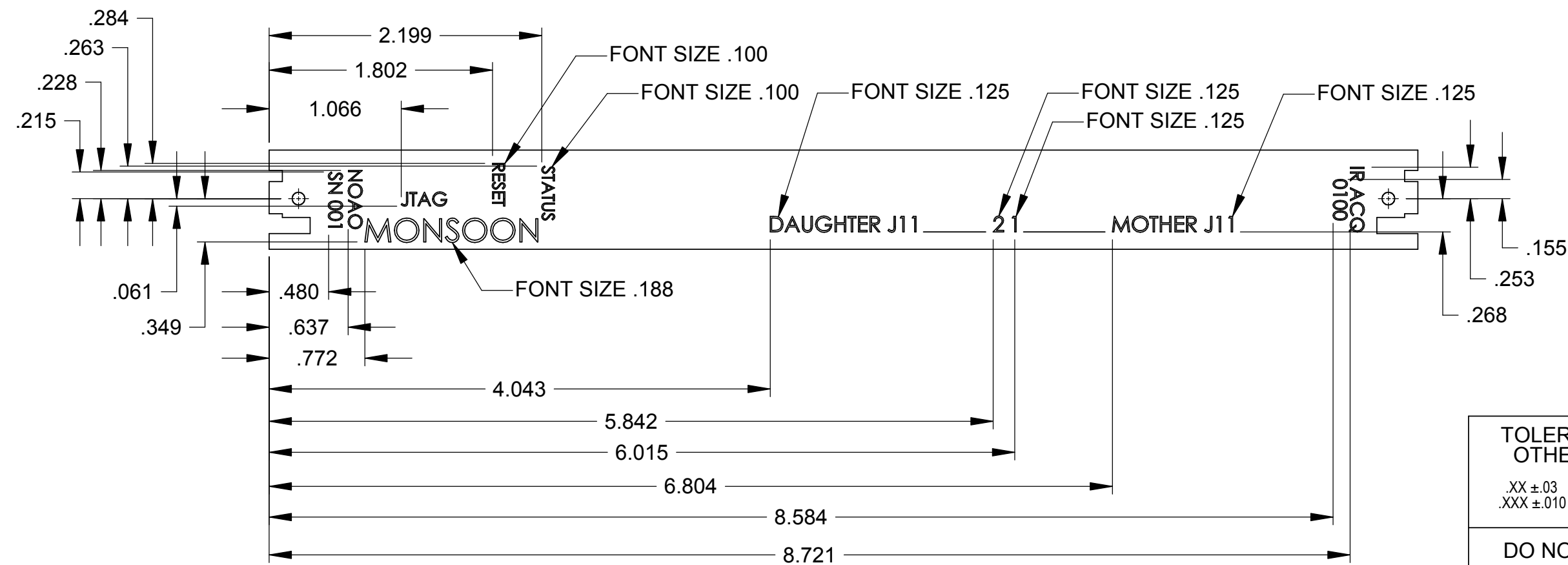


NOTES: UNLESS OTHERWISE SPECIFIED:

1. INTERPRET DRAWING IAW ASME Y14.5M-1994.
2. DIMENSIONS ARE INCHES.
3. REMOVE ALL BURRS AND SHARP EDGES .010.
4. MATERIAL: MAKE FROM SCHROFF 6U, SHIELDED FRONT PANEL. PART NO. 30848-317.
5. FINISH: STRIP CLEAR ANODIZE FROM PANEL. RE-ANODIZE PER MIL-A-8625, TYPE II, CLASS 2, ORANGE.
6. ENGRAVE PER DETAIL B. FONT SIZE .110 UNLESS OTHERWISE SPECIFIED. FILL WITH BLUE PAINT AFTER ANODIZING.
7. ENGRAVE SERIAL NUMBERS IN SEQUENCE.

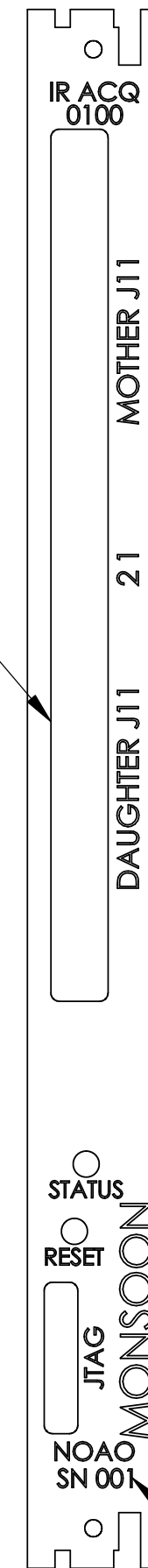


DETAIL A

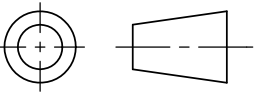


DETAIL B

SEE DETAIL A FOR PANEL CUTOUTS



SEE DETAIL B FOR ENGRAVING CALLOUTS

TOLERANCES UNLESS OTHERWISE NOTED .XX ±.03 .XXX ±.010		ANGULAR ±.5°	 THIRD ANGLE PROJECTION		NATIONAL OPTICAL ASTRONOMY OBSERVATORIES OPERATED BY THE ASSOCIATION OF UNIVERSITIES FOR RESEARCH IN ASTRONOMY UNDER COOPERATIVE AGREEMENT WITH NATIONAL SCIENCE FOUNDATION	
DO NOT SCALE DRAWING		NAME		USED ON		
NEXT ASSEMBLY		IR ACQUISITION PANEL		MONSOON		
MON.3000.0001				DWG SIZE	REV	
				C		
SCALE: 1:1	DESIGNED BY:	CHECKED BY:	DRAWING NUMBER			
DWG PRODUCED USING SOLIDWORKS 2004	DRAWN BY: S. Rath	APPROVED BY:	MNSN-EL-02-1101			
		RELEASE DATE:	17MAY04	SHEET: 1 OF 1		