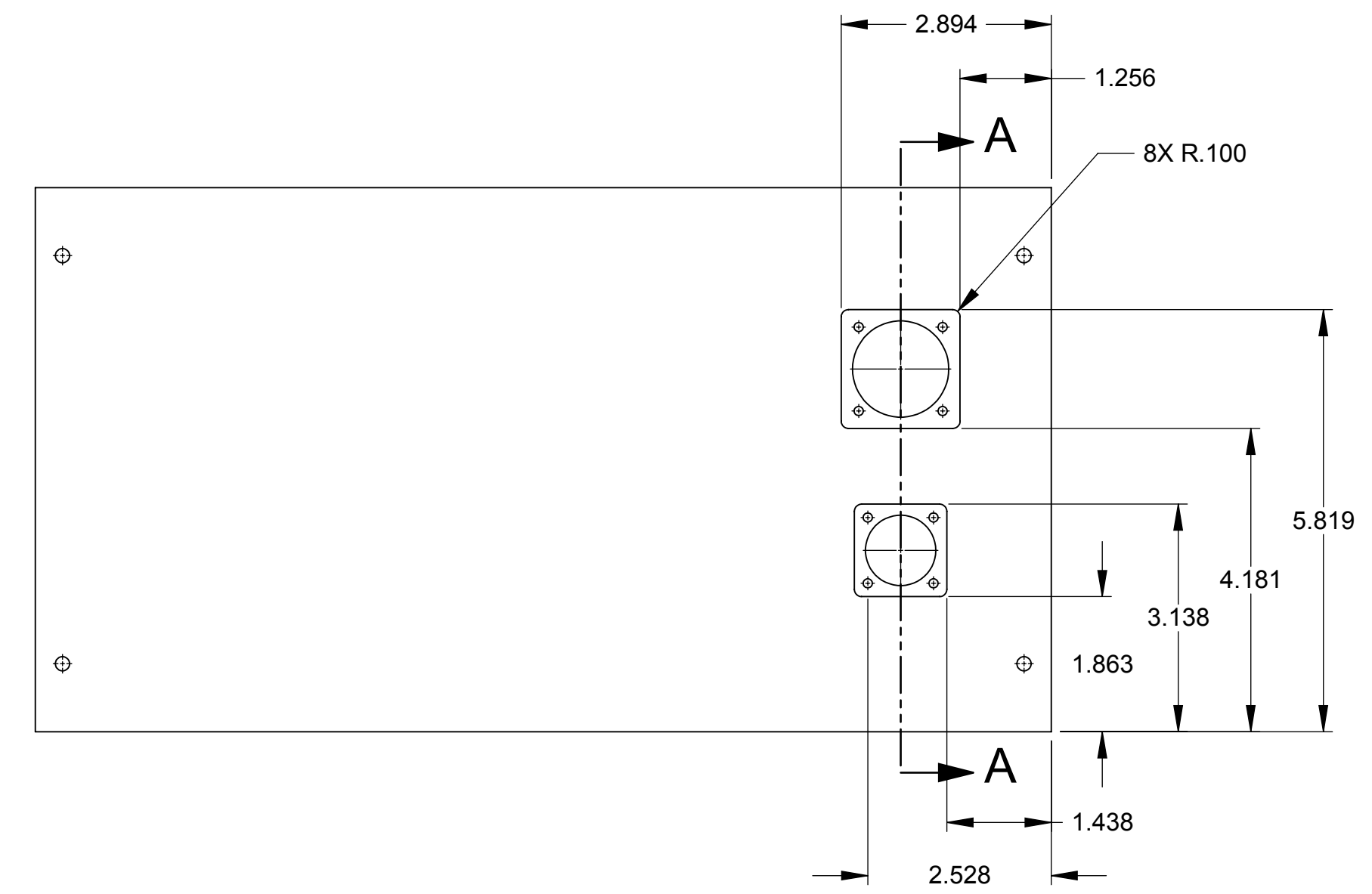
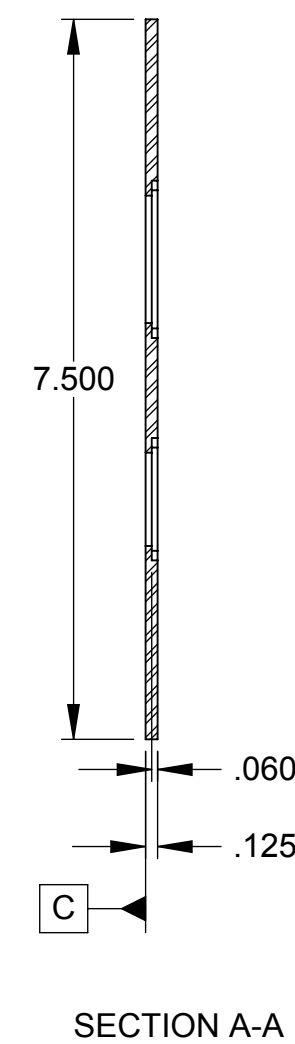
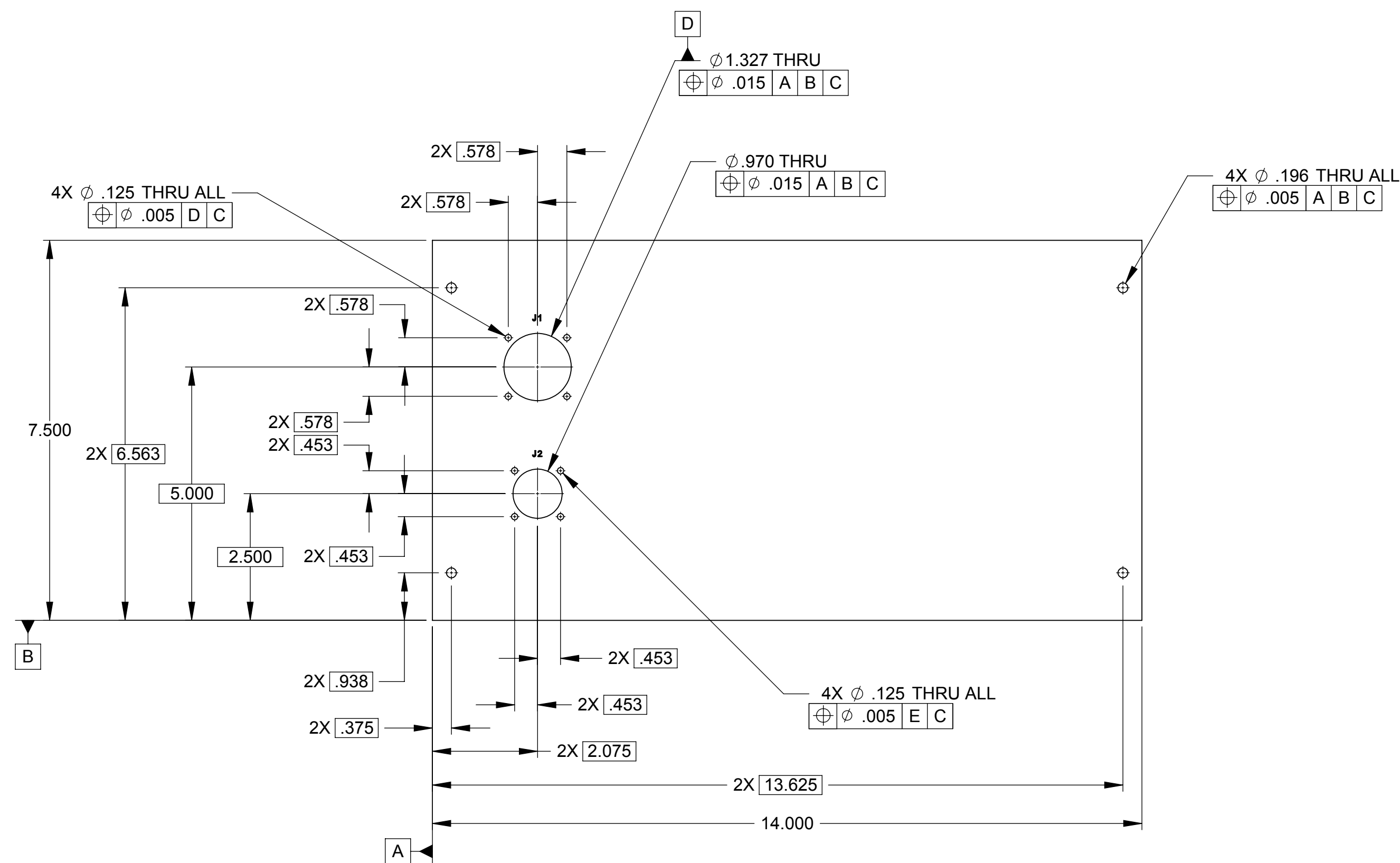


NOTES: UNLESS OTHERWISE SPECIFIED:

1. DIMENSIONING AND TOLERANCING PER ASME Y14.5M 1994.
2. ALL DIMENSIONS IN INCHES EXCEPT AS NOTED.
3. CHAMFER OR RADIUS SHARP EDGES .020-.040 TO REMOVE BURRS. THIS INCLUDES EDGES ON HOLES, SLOTS, POCKETS, AND THREADED HOLES.
4. MACHINED SURFACE ROUGHNESS TO BE 32 MICRO-INCHES OR BETTER.
5. FINISH: CLEAR SULFURIC ANODIZE PER MIL-A-8625, TYPE II, CLASS 2 TO A THICKNESS OF .0002-.0005. FINISHED PARTS ARE TO HAVE A UNIFORM APPEARANCE WHEN EXAMINED VISUALLY.
6. SEE GRAPHICS AREA FOR SPECIFIC NOTES.



ENGRAVE AS SHOWN
FILL WITH BLACK PAINT
AFTER ANODIZE

THIS REAR PANEL IS USED WITH
MONSOON BOXES THAT DO NOT
HAVE REAR FEET

MATERIAL : 6061-T6 (SS)		TOLERANCES UNLESS OTHERWISE NOTED XX ±.03 XXX ±.010		ANGULAR ±.5°		THIRD ANGLE PROJECTION		NATIONAL OPTICAL ASTRONOMY OBSERVATORY OPERATED BY THE ASSOCIATION OF UNIVERSITIES FOR RESEARCH IN ASTRONOMY UNDER COOPERATIVE AGREEMENT WITH NATIONAL SCIENCE FOUNDATION	
DO NOT SCALE DRAWING		NAME		USED ON		DWG SIZE		REV	
NEXT ASSEMBLY		6 SLOT CHASSIS REAR PANEL NON-RECESSED		MONSOON		D		OD	
SCALE: 1:2		DESIGNED BY:		CHECKED BY:		DRAWING NUMBER		MNSN-EL-02-1059	
DWG PRODUCED USING		DRAWN BY:		APPROVED BY:		RELEASE DATE:		SHEET: 1 OF 1	
CALCULATED WEIGHT		SOLIDWORKS		S. RATH					

-1	1.240
ITEM	WEIGHT (Lbs)
CALCULATED WEIGHT	

E
D
C
B
A