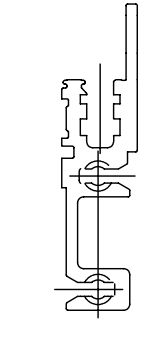
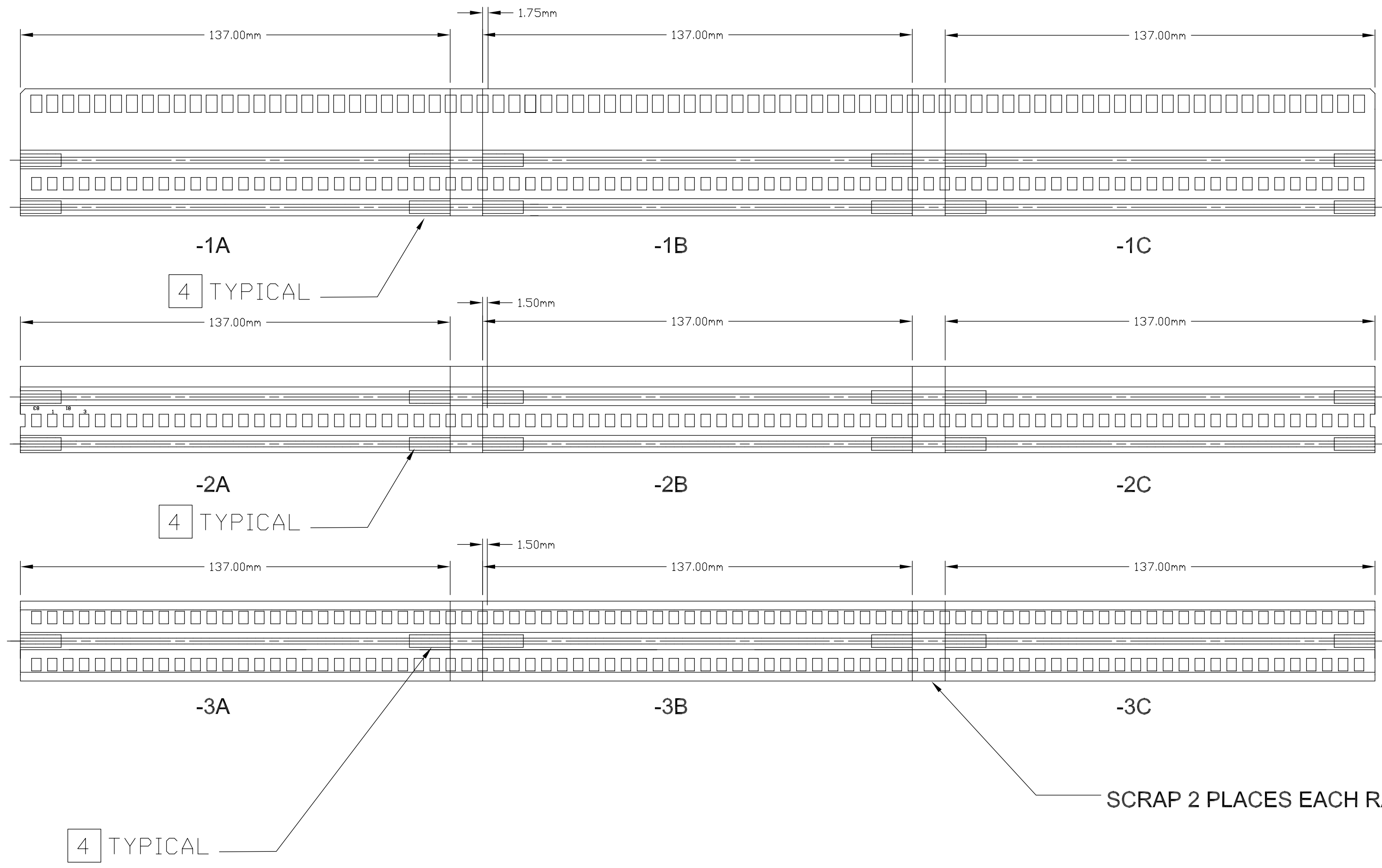
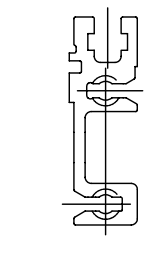


- NOTES:**
1. REMOVE ALL BURRS AND SHARP EDGES .030 R MAX.
 2. MACHINED SURFACE ROUGHNESS 125
 3. MATERIAL - Schroff P/N to the right of each rail
 4. TAP CUT ENDS 4.0 MM X 13MM DEEP

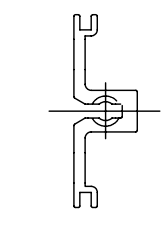
| REVISIONS | | | | | | |
|-----------|-----|--|-----|-------|-----|------|
| ZONE | LTR | REVISIONS | ECR | DATE | BY | APRV |
| -- | | INITIAL RELEASE | | JUN06 | DMS | PJS |
| A | | CHANGE RAIL LENGTH FROM 135MM TO 137MM | | JUL06 | DMS | |



PART-NO: 34560-384 x 4
YIELD 12 PIECES 137 MM LONG

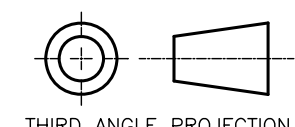


PART-NO: 34560-584 x 2
YIELD 6 PIECES 137 MM LONG



PART-NO: 34561-584 x 2
YIELD 6 PIECES 137 MM LONG

**ALTERED ITEMS FROM
SCHROFF SUBRACK KIT P/N: 20817-019**

| QTY. REQ. | PART OR IDENTIFYING NO. | DESCRIPTION | MATERIAL/SPECIFICATION | IDENT. | ITEM NO. |
|---|-------------------------|---|---------------------------|--|----------|
| TOLERANCES UNLESS OTHERWISE NOTED .XX ±.03 .XXX ±.010 | |  THIRD ANGLE PROJECTION | | NATIONAL SOLAR OBSERVATORY <small>OPERATED BY THE</small> ASSOCIATION OF UNIVERSITIES FOR RESEARCH IN ASTRONOMY <small>UNDER COOPERATIVE AGREEMENT WITH</small> NATIONAL SCIENCE FOUNDATION | |
| DO NOT SCALE DRAWING | | NAME | USED ON | REF | |
| NEXT ASSEMBLY MNSN-EL-02-0003 | | DETAIL 6 SLOT HORIZONTAL RAIL MODIFICATIONS | MONSOON | REV | |
| SCALE: FULL | | DESIGNED BY P.SCHMITT | DATE JAN05 | CHECKED BY | DATE |
| DWG PRODUCED USING AUTOCAD LT2000 | | DRAWN BY D.STOVER | DATE JUN06 | APPROVED BY | DATE |
| | | PRINT ISSUED | DATE | APPROVED BY | DATE |
| | | | DWG NO MNSN-EL-02-1020 | RELEASED | |
| | | | SHEET 1 OF 1 | | |