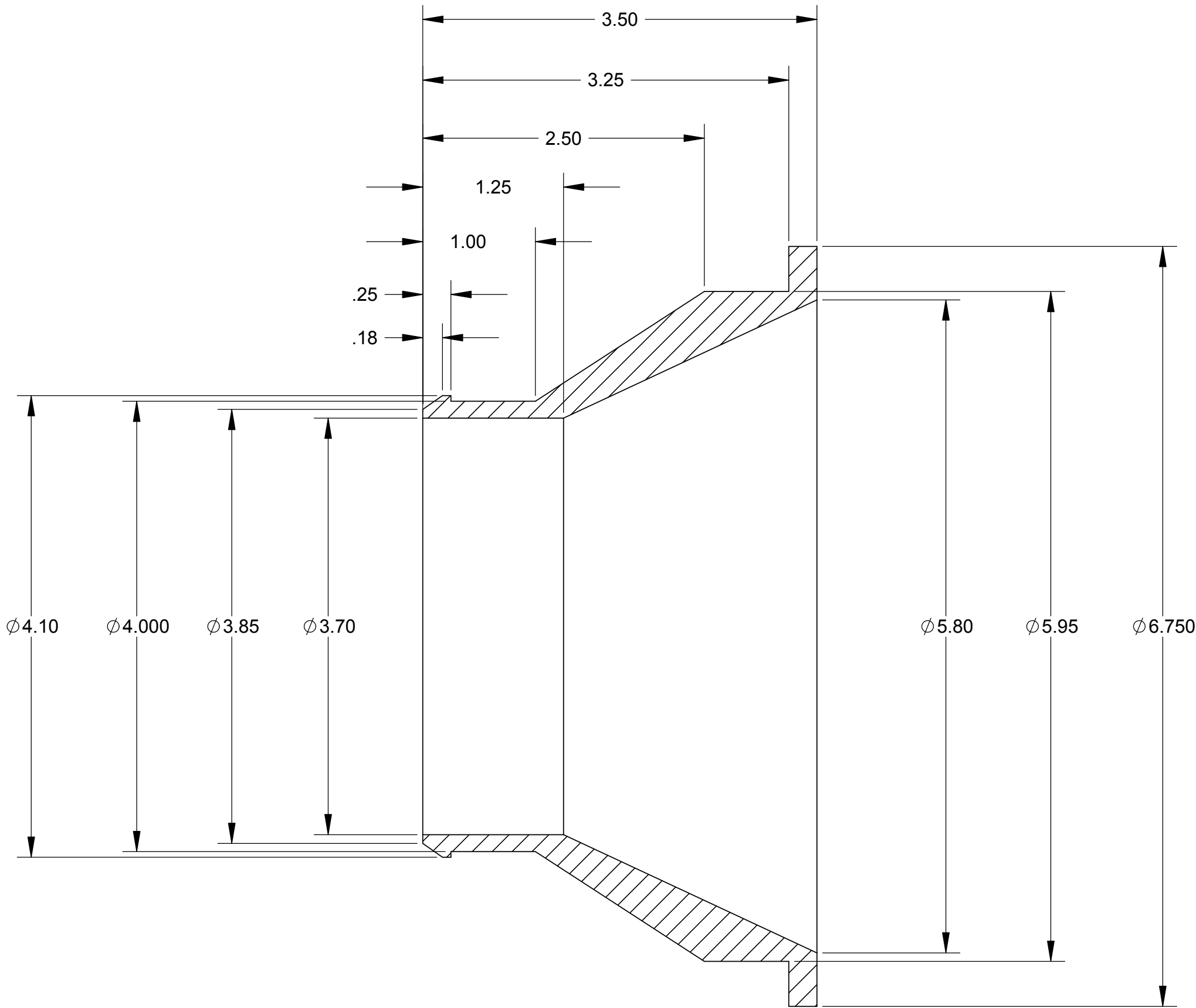
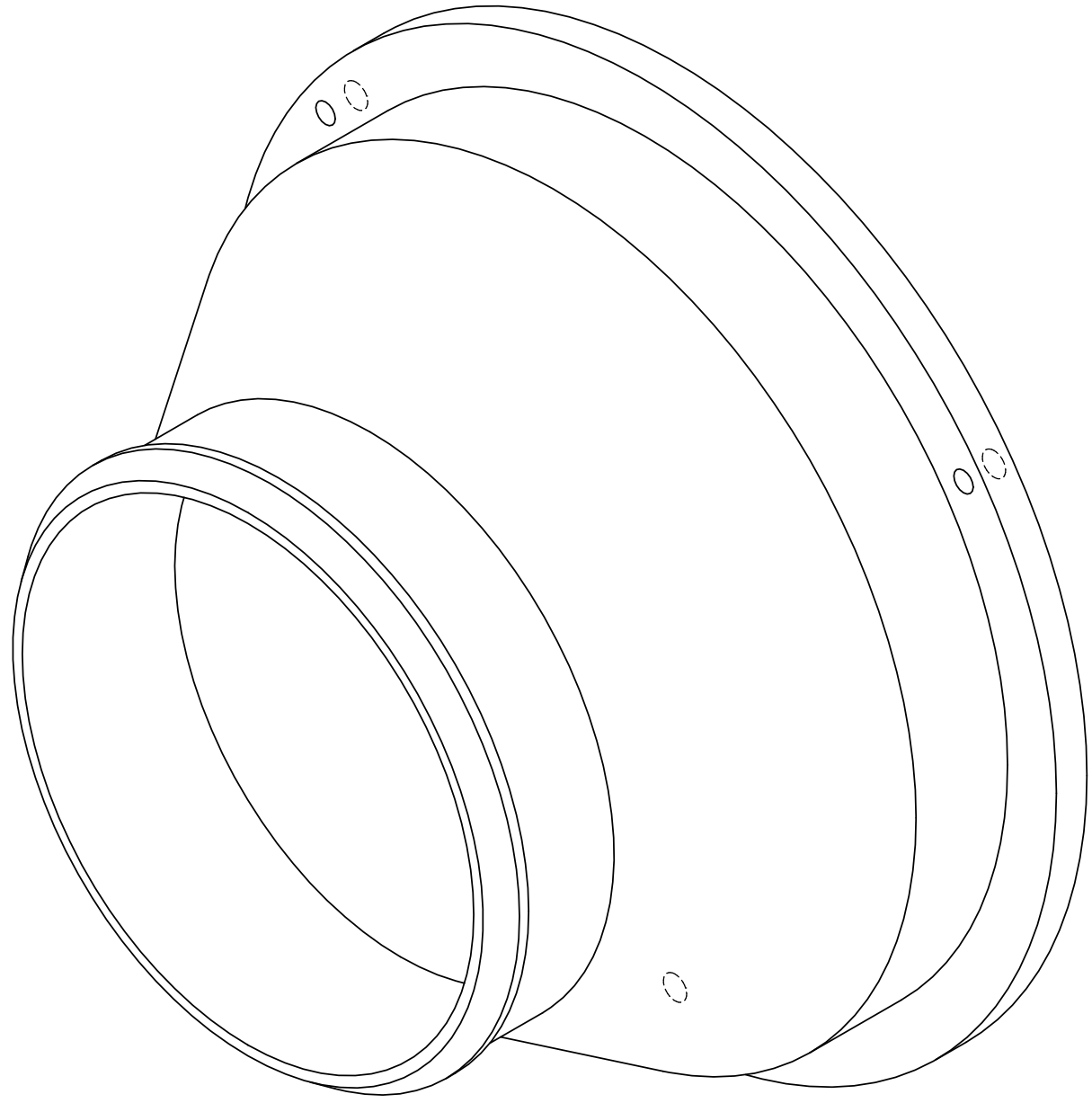
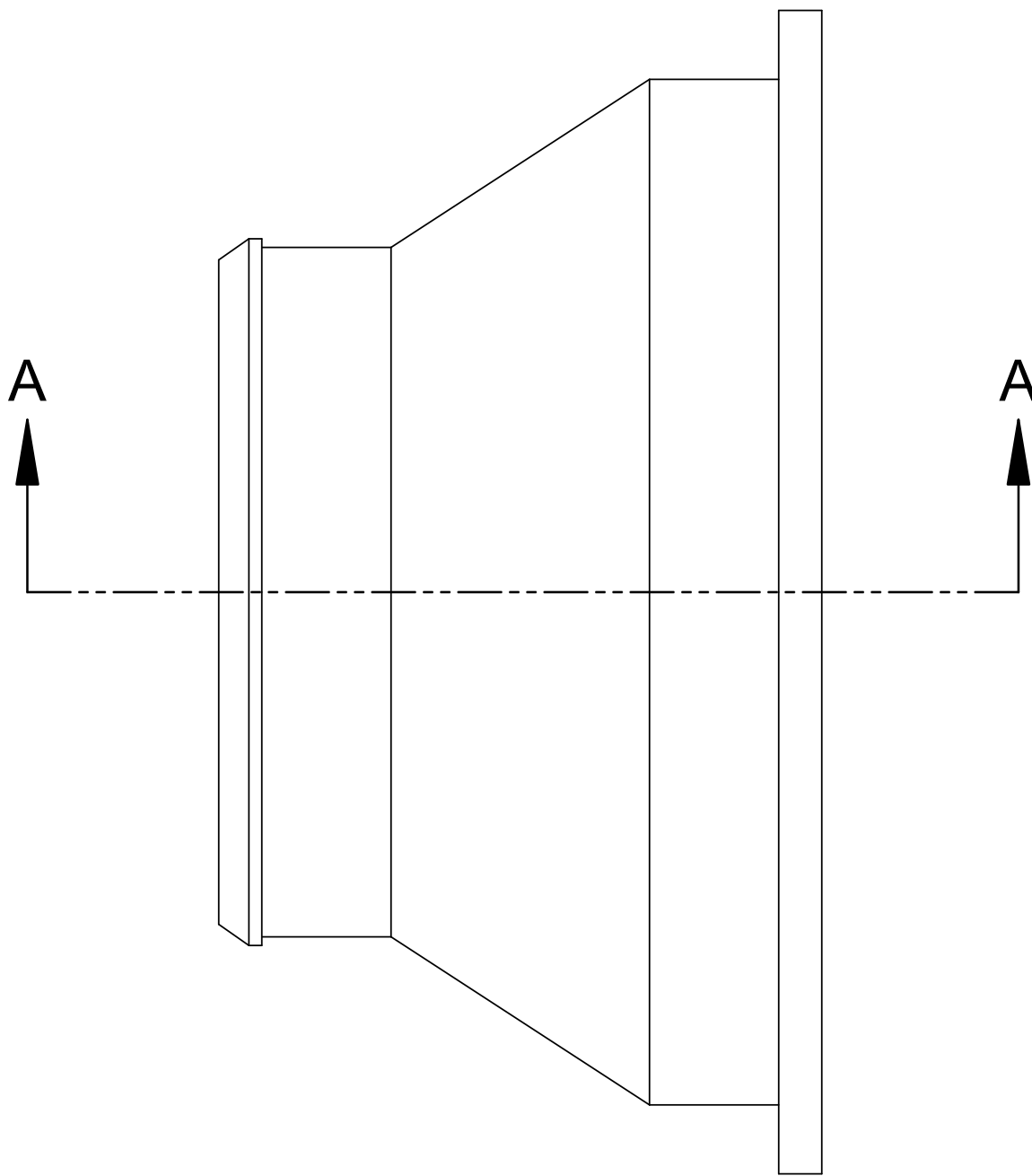
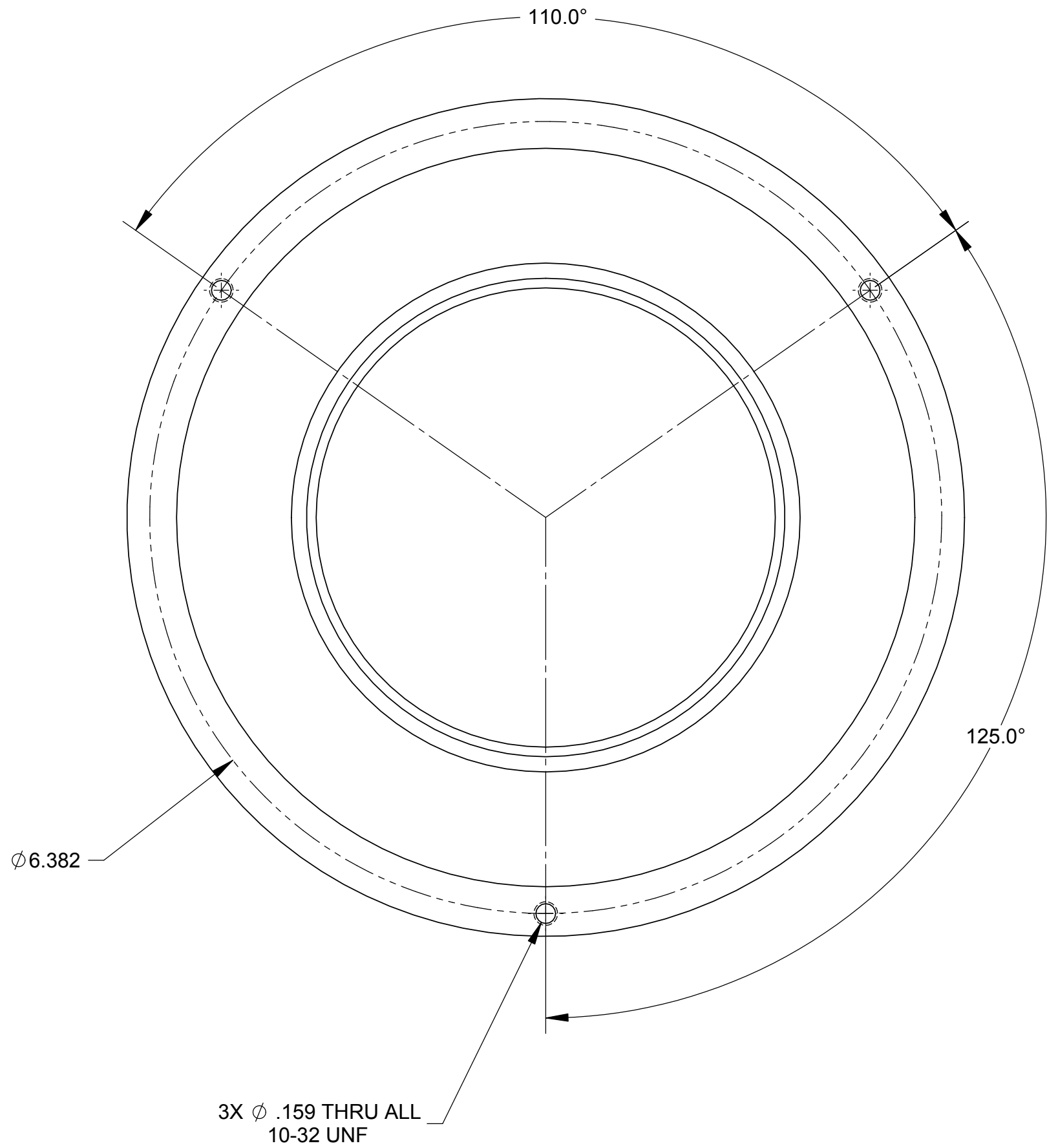


NOTES: UNLESS OTHERWISE SPECIFIED:

1. DIMENSIONING AND TOLERANCING PER ANSI Y14.5M 1994.
2. ALL DIMENSIONS IN INCHES EXCEPT AS NOTED.
3. CHAMFER OR RADIUS SHARP EDGES .020-.040 TO REMOVE BURRS. THIS INCLUDES EDGES ON HOLES, SLOTS, POCKETS, AND THREADED HOLES.
4. MACHINED SURFACE ROUGHNESS TO BE 32 MICRO-INCHES OR BETTER.
5. FINISH: BLACK SULPHURIC ANODIZE.



SECTION A-A

ZONE	REV	DESCRIPTION	BY	DATE	APV BY
REVISIONS					

MATERIAL : ALUMINUM 6061-T651			CALCULATED WEIGHT (Lbs)		1.748
TOLERANCES UNLESS OTHERWISE NOTED .XX ±.03 .XXX ±.005		THIRD ANGLE PROJECTION	OPERATED BY THE National Optical Astronomy Observatory ASSOCIATION OF UNIVERSITIES FOR RESEARCH IN ASTRONOMY UNDER COOPERATIVE AGREEMENT WITH THE NATIONAL SCIENCE FOUNDATION		
NEXT ASSEMBLIES		DRAWING TITLE		USED ON:	
MNSN-EL-02-0001		FAN EXHAUST ATTACHMENT - MONSOON BOX		DRAWING SIZE	CURRENT REV
				D	OD
				SCALE: 1:1	DO NOT SCALE DRAWING
DESIGNED BY: MRA		CHECKED BY: JRA	DRAWING NUMBER		
DRAFTED BY: MRA		APPROVED BY: PS	MNSN-EL-02-1001		
DWG PRODUCED WITHSOLIDWORKS 2004			RELEASE DATE: 8/6/2004	SHEET: 1 OF 1	