

\*F\* COLUMN = SHIELD PINS, ODD=TOP, EVEN=BOTTOM  
 ERNI 064785 VME or PCI TRANSION  
 hm\_rnf\_type\_b\_zzpos\_w\_shield

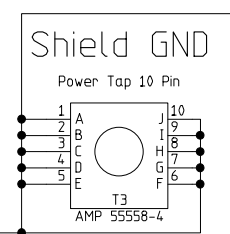
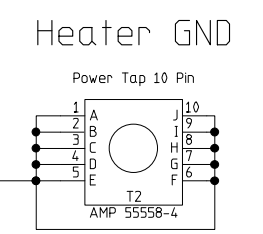
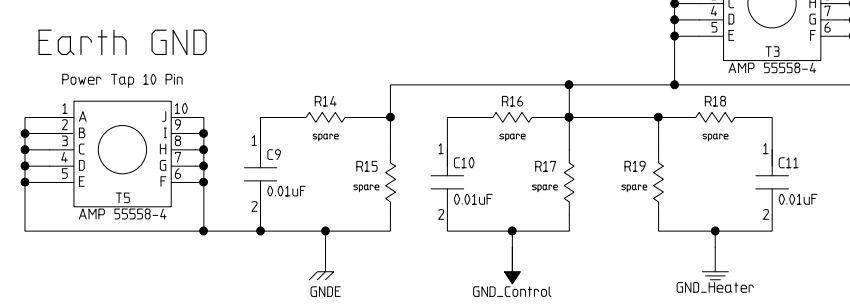
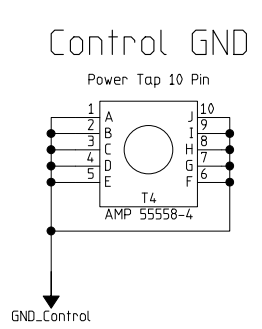
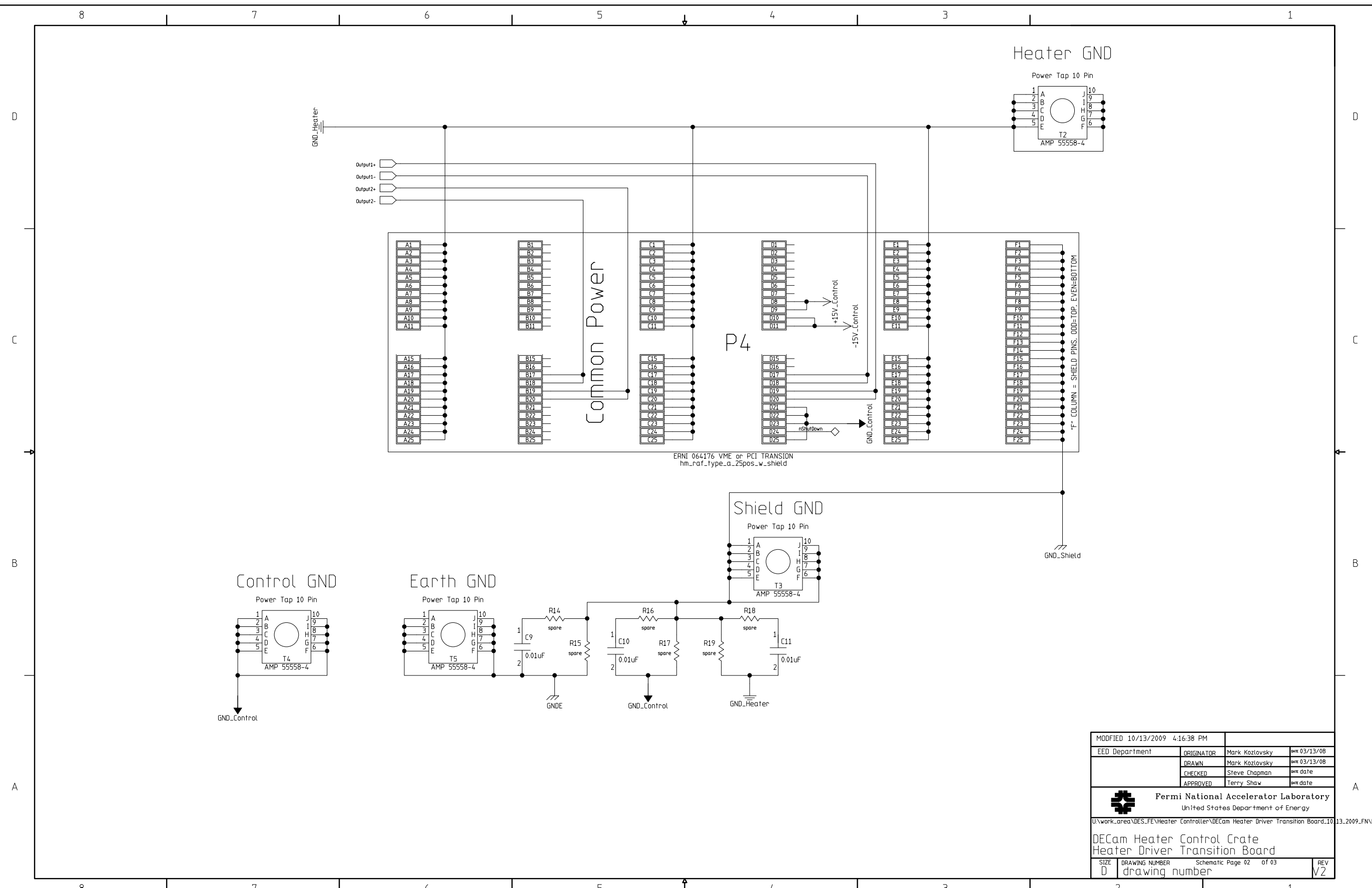
ERNI 064784 VME or PCI TRANSION  
 hm\_rnf\_type\_b\_19pos\_w\_shield  
 \*F\* COLUMN = SHIELD PINS, ODD=TOP, EVEN=BOTTOM

MODIFIED 10/13/2009 4:16:38 PM		
EED Department	ORIGINATOR	Mark Kozlovsky DATE 03/13/08
Page 1	DRAWN	Mark Kozlovsky DATE 03/13/08
	CHECKED	Steve Chapman DATE date
	APPROVED	Terry Shaw DATE date

**Fermi National Accelerator Laboratory**  
 United States Department of Energy

U:\work\_area\DES\_FE\Heater\_Controller\DECam Heater Driver Transition Board\13.2009\_FN\DECam Heater Driver Transition Board\DECam Heater Driver Transition Board.prj  
**DECam Heater Control Crate**  
**Heater Driver Transition Board**

SIZE	DRAWING NUMBER	Schematic Page 01 of 03	REV
D	drawing number		V2

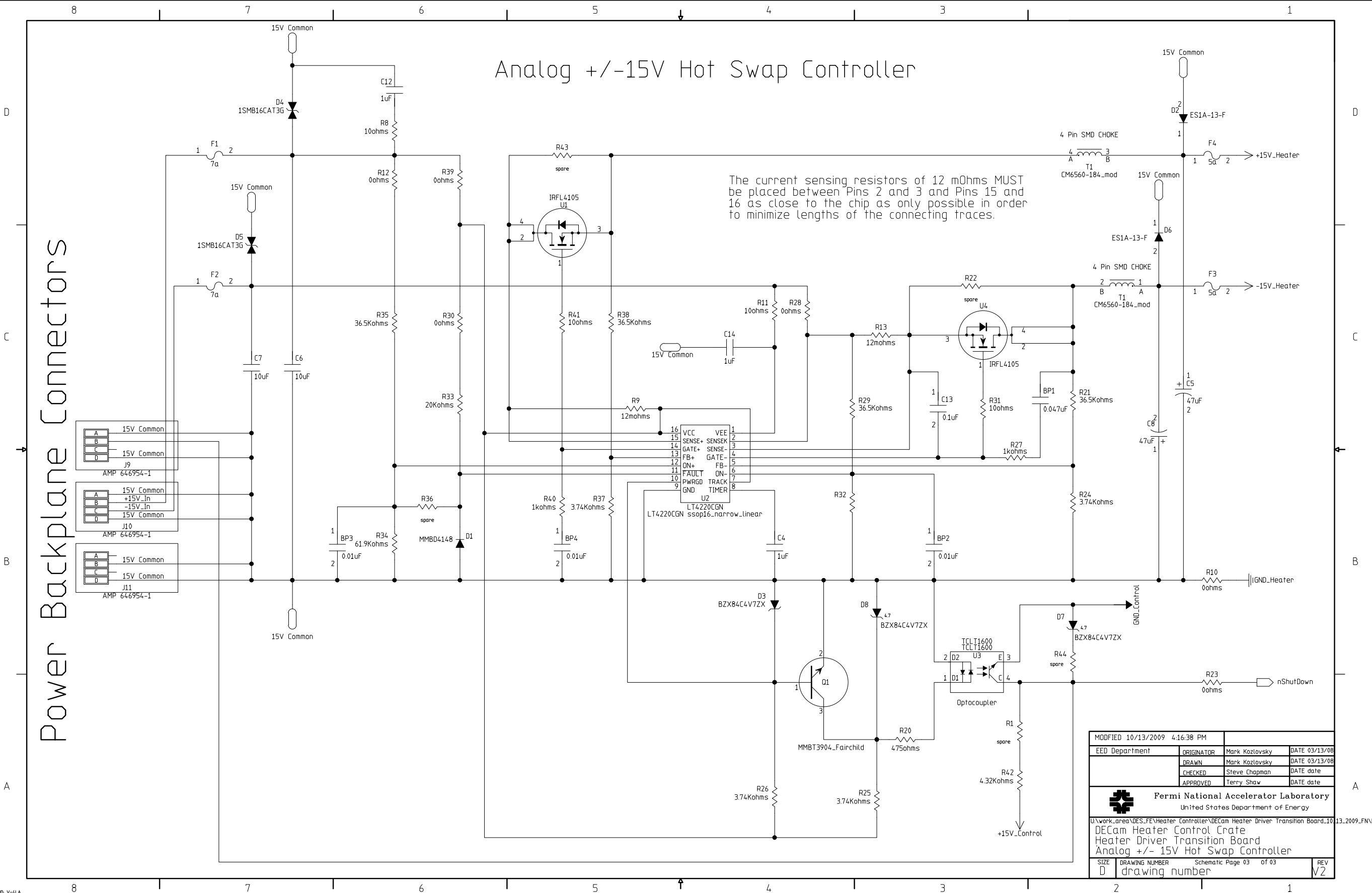


MODIFIED 10/13/2009 4:16:38 PM			
EED Department	ORIGINATOR	Mark Kozlovsky	DATE 03/13/08
	DRAWN	Mark Kozlovsky	DATE 03/13/08
	CHECKED	Steve Chapman	DATE date
	APPROVED	Terry Shaw	DATE date
 <b>Fermi National Accelerator Laboratory</b> United States Department of Energy			
U:\work_area\DES_FE\Heater Controller\DECam Heater Driver Transition Board\13.2009_FN\DECam Heater Driver Transition Board\DECam Heater Driver Transition Board.dwg			
DECam Heater Control Crate		Heater Driver Transition Board	
SIZE	DRAWING NUMBER	Schematic Page 02 of 03	REV
D	drawing number		V2

# Analog +/-15V Hot Swap Controller

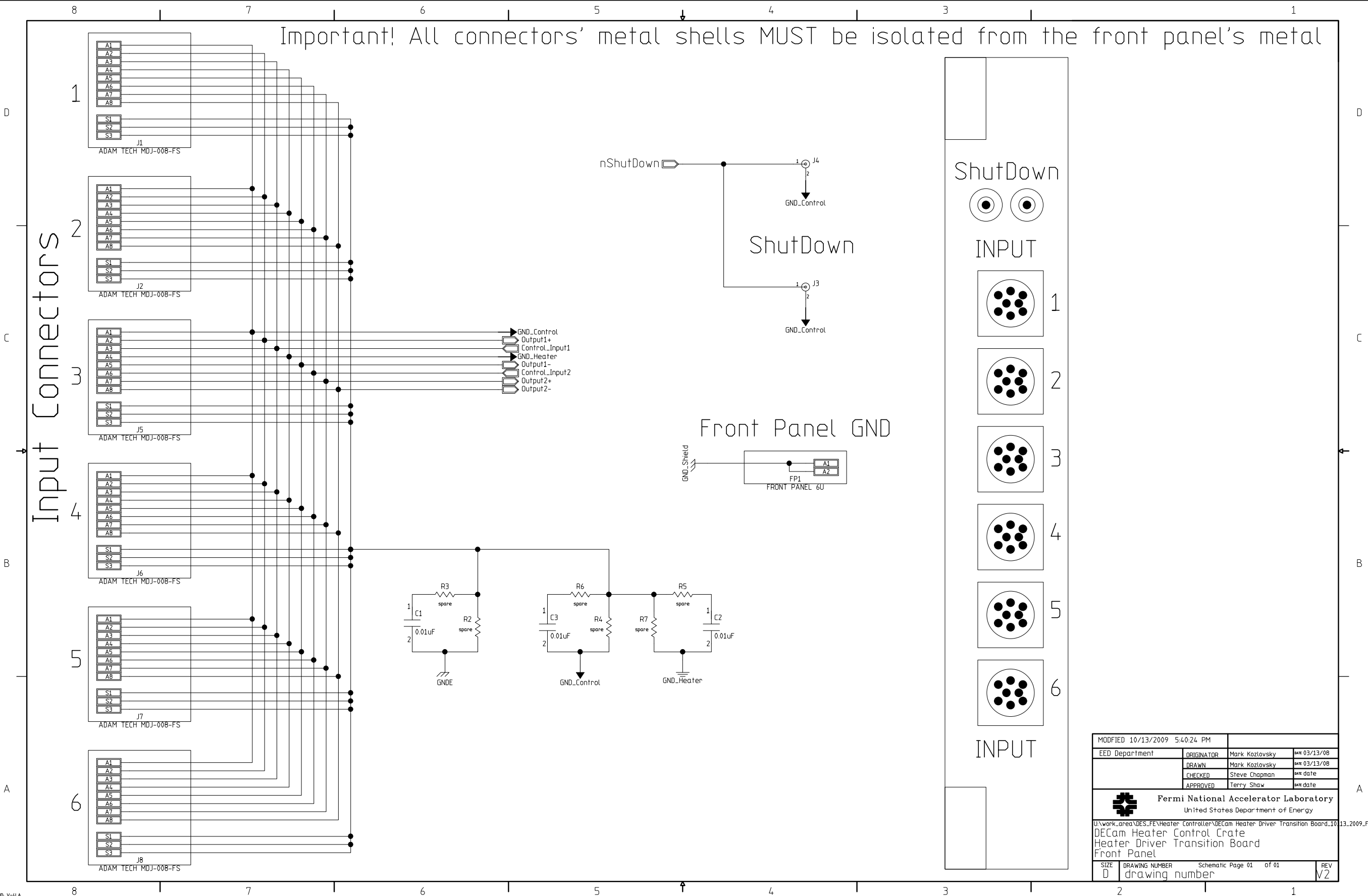
The current sensing resistors of 12 mOhms MUST be placed between Pins 2 and 3 and Pins 15 and 16 as close to the chip as only possible in order to minimize lengths of the connecting traces.


Power Backplane Connectors



MODIFIED 10/13/2009 4:16:38 PM			
EED Department	ORIGINATOR	Mark Kozlovsky	DATE 03/13/08
	DRAWN	Mark Kozlovsky	DATE 03/13/08
	CHECKED	Steve Chapman	DATE date
	APPROVED	Terry Shaw	DATE date
 <b>Fermi National Accelerator Laboratory</b> United States Department of Energy			
U:\work_area\DES_FE\Heater_Controller\DECam_Heater_Driver_Transition_Board_1013.2009_FN\DECam_Heater_Driver_Transition_Board\DECam_Heater_Driver_Transition_Board.pj			
DECam Heater Control Crate Heater Driver Transition Board Analog +/- 15V Hot Swap Controller			
SIZE	DRAWING NUMBER	Schematic Page 03 of 03	REV
D	drawing number		V2

Important! All connectors' metal shells MUST be isolated from the front panel's metal



MODIFIED 10/13/2009 5:40:24 PM		
EED Department	ORIGINATOR	Mark Kozlovsky DATE 03/13/08
	DRAWN	Mark Kozlovsky DATE 03/13/08
	CHECKED	Steve Chapman DATE date
	APPROVED	Terry Shaw DATE date
 <b>Fermi National Accelerator Laboratory</b> United States Department of Energy		
U:\work\area\DES_FE\Heater Controller\DECam Heater Driver Transition Board\13.2009_FN\DECam Heater Driver Transition Board\DECam Heater Driver Transition Board.dwg DECam Heater Control Crate Heater Driver Transition Board Front Panel		
SIZE	DRAWING NUMBER	Schematic Page 01 of 01 REV
D	drawing number	V2