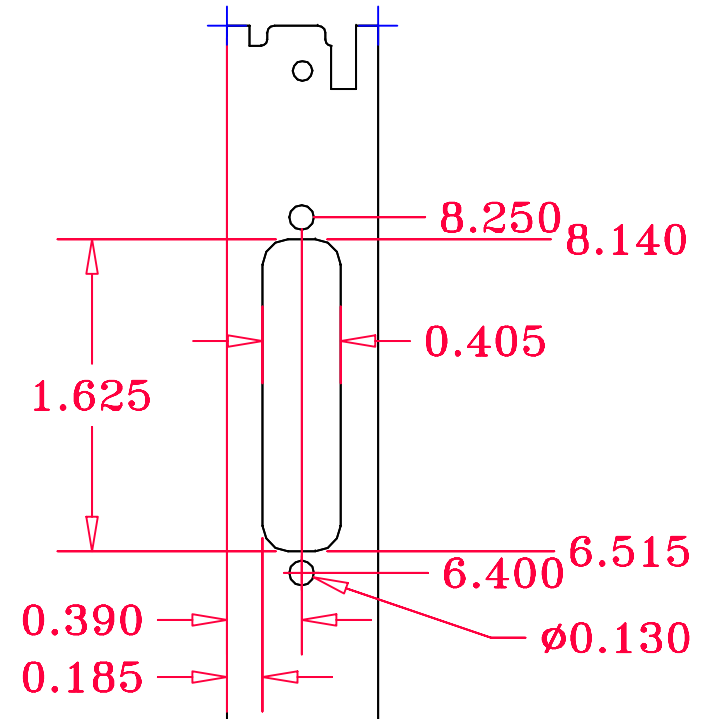


| | | | |
|------|-------------|-------|------|
| REV. | DESCRIPTION | DRAWN | DATE |
| | | APPD. | DATE |

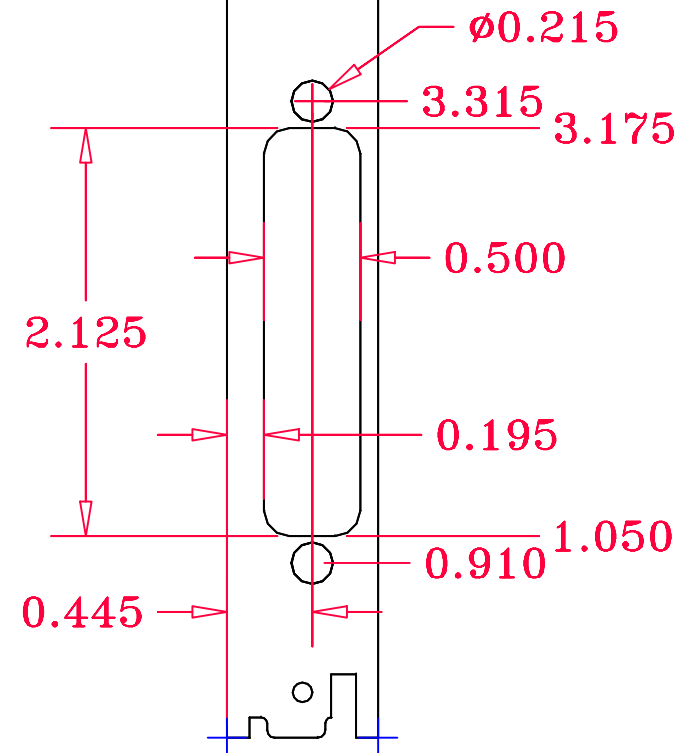
1.625 x .405
cutout for
25 pin 'D'
connector




Caution: There are two orientations for front panels; note orientation of large slots is different (top-to-bottom) for Driver, Patch panel boards (20) and the mating transition boards (6).

All measurements originate from bottom left corner of front panel.

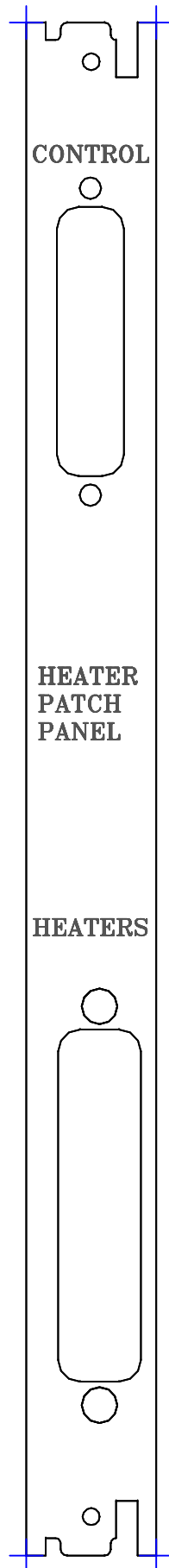
2.125 x .5
cutout for
50 pin 'D'
connector




All cutouts +/-
5mil. tol.

| ITEM | PART NO. | DESCRIPTION OR SIZE | QTY. |
|---|----------|---------------------|-------------------|
| PARTS LIST | | | |
| UNLESS OTHERWISE SPEC. | | ORIGINATOR | Mark Koslowski |
| FRACTIONS | DECIMALS | ANGLES | DRAWN |
| 1/64 | .015625 | 0.01 | Patrick M. Liston |
| | | CHECKED | |
| | | APPROVED | |
| | | USED ON | DIMENSION |
| | | MATERIAL- | |
|  FERMI NATIONAL ACCELERATOR LABORATORY UNITED STATES DEPARTMENT OF ENERGY | | | |
| HEATER PATCH PANEL BOARD | | | |
| SCALE | FILMED | DRAWING NUMBER | REV. |
| | | MB-173709-2A | |

| | | | |
|------|-------------|-------|------|
| REV. | DESCRIPTION | DRAWN | DATE |
| | | APPD. | DATE |



Finished front panels should be RED Anodized on the front surface only with WHITE lettering. The remaining surfaces should be finished with clear irradiated conductive finish.

| ITEM | PART NO. | DESCRIPTION OR SIZE | QTY. |
|---|----------|---------------------|-------------------|
| PARTS LIST | | | |
| UNLESS OTHERWISE SPEC. | | ORIGINATOR | Mark Koslowski |
| FRACTIONS | DECIMALS | ANGLES | DRAWN |
| 1/64 | .015625 | 0.01 | Patrick M. Liston |
| | | CHECKED | |
| | | APPROVED | |
| | | USED ON | SILKSCREEN |
| | | MATERIAL- | |
|  FERMI NATIONAL ACCELERATOR LABORATORY UNITED STATES DEPARTMENT OF ENERGY | | | |
| HEATER PATCH PANEL BOARD | | | |
| SCALE | FILMED | DRAWING NUMBER | REV. |
| 1:1 | | MB-173709-2A | |

