

SARA



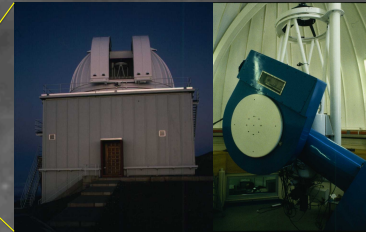
The Southeastern Association for Research in Astronomy

SARA is a consortium of fourteen colleges and universities, remotely operating telescopes in Arizona, Chile, and the Canary Islands, for research, instruction, and public outreach. Our site locations offer access to both northern and southern hemispheres of the sky, allowing study of complete samples of objects and rapid response to transient targets wherever located. Operation via Internet means that we can use these "live" with classes or other groups, and provides very flexible scheduling. The scientific interests of SARA astronomers, like the institutions themselves, are diverse; this sometimes provides a large "virtual department" for schools with only a few astronomers, offering both graduate and undergraduate programs. Topics of investigation range from asteroids to quasars, and stars to galaxies. Additional partners are Lowell Observatory, the Instituto de Astrofísica de Canarias in Spain, and the Chilean astronomical community.

sarabobservatory.org



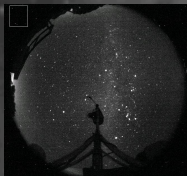
1-meter telescope, Kitt Peak, Arizona



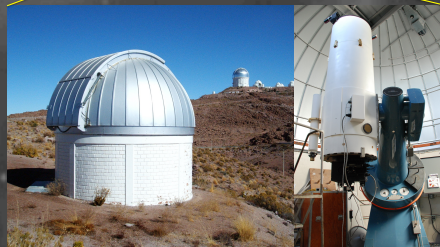
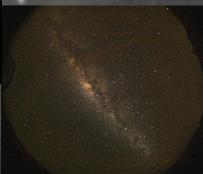
1-meter Jacobus Kapteyn telescope, La Palma, Canary Islands

SARA member institutions:

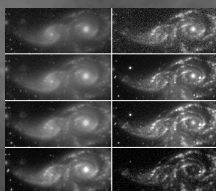
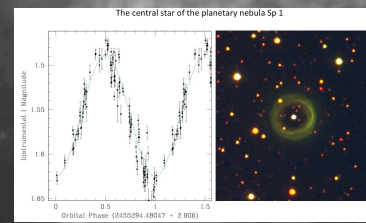
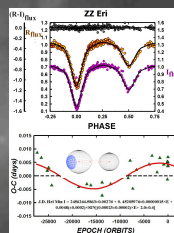
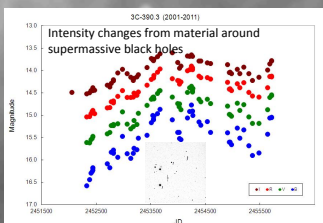
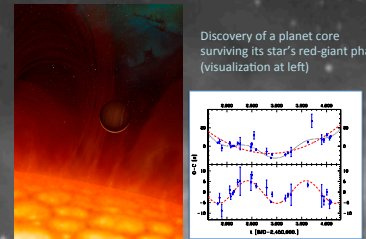
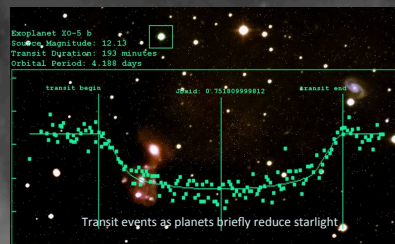
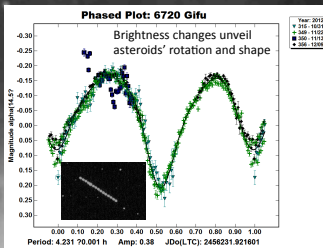
- East Tennessee State University
- Florida International University
- Florida Institute of Technology
- Valdosta State University
- Ball State University
- Butler University
- Clemson University
- Agnes Scott College
- Valparaiso University
- University of Alabama
- Texas A&M University-Commerce
- Embry-Riddle Aeronautical University
- Florida Gulf Coast University
- University of Delaware/Mount Cuba Observatory



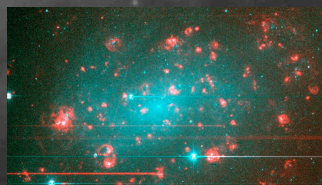
Looking up: typical views from our all-sky monitoring cameras at Kitt Peak and Cerro Tololo



0.6-meter telescope, Cerro Tololo, Chile



Optical and satellite UV measurement of dust in spiral galaxy NGC 2207



Starbirth in the nearby galaxy NGC 300



Supernova 2014j in galaxy M82 (inset: earlier view)

Image credits: T. Hillwig (VU), X. Han (Butler), M. Hitchcock (ASU), W. Keel (UA), C. Mann, T. Oswalt (BRU), K. Rumsay (VSU), R. Samsic & W. Van Hamme (FU), M. Wood (TAMU-C), Google Earth